



IDIS Solution Suite

Software Manual

Streaming Service

Powered by **Direct IP™**

Before reading this manual

This Operation Manual provides instructions for using IDIS Solution Suite, a network integration solution enabling remote control of network cameras and video servers.

References to IDIS Solution Suite system throughout this Operation Manual mean the computer system on which the IDIS Solution Suite program is running. References to device mean a network camera or a network video server.

Following program is provided in addition to IDIS Solution Suite:

Start > IDIS Solution Suite > Utility > ProblemReporter (contact your IDIS Solution Suite distributor for the **SecretKey**.)

Copyright

© 2013 IDIS Co., Ltd.

IDIS Co., Ltd. reserves all rights concerning this operation manual.

Use or duplication of this operation manual in part or whole without the prior consent of IDIS Co., Ltd. is strictly prohibited.



Contents of this operation manual are subject to change without prior notice for reasons such as functionality enhancements.

Registered Trademarks

IDIS is a registered trademark of IDIS Co., Ltd.

Other company and product names are registered trademarks of their respective owners.

In-Text

Symbol	Type	Description
	Caution	Important information concerning a specific function.
	Note	Useful information concerning a specific function.

WEEE (Waste Electrical & Electronic Equipment)

Correct Disposal of This Product

(Applicable in the European Union and other European countries with separate collection systems)



This marking shown on the product or its literature, indicates that it should not be disposed with other household wastes at the end of its working life. To prevent possible harm to the environment or human health from uncontrolled waste disposal, please separate this from other types of wastes and recycle it responsibly to promote the sustainable reuse of material resources.

Household users should contact either the retailer where they purchased this product, or their local government office, for details of where and how they can take this item for environmentally safe recycling.

Business users should contact their supplier and check the terms and conditions of the purchase contract. This product should not be mixed with other commercial wastes for disposal.

Table of Contents

1	Part 1 – Introduction..... 4
	System Diagram.....5
	Multi-Server.....5
	Single-Server5
2	Part 2 - Installation 6
	Product Information.....6
	Package Contents6
	System Requirements6
	Installation.....8
	Server System.....8
	Client System11
	Uninstall13
3	Part 3 - Getting Started 14
	Running Services.....14
	Registering Services14

Part 1 – Introduction

This document describes installation and operation of IDIS Solution Suite Video Wall software, which is designed to be used with IDIS Solution Suite Standard or IDIS Solution Suite Federation software.

Multiple users can monitor video from devices through the streaming server. When the streaming service is not running, monitoring is still available, but it is restricted to fewer users based on the maximum number of simultaneous connections supported by the device.

When you register more than one streaming service by buying additional WIBU-Keys, the IDIS Solution Suite program distributes streaming workload to the several streaming servers by using the load balancing function, and it increases monitoring stability. If one of the streaming servers stops operating for any system problem, other streaming servers take that server's place within the limit of the number of channels that can be streamed.

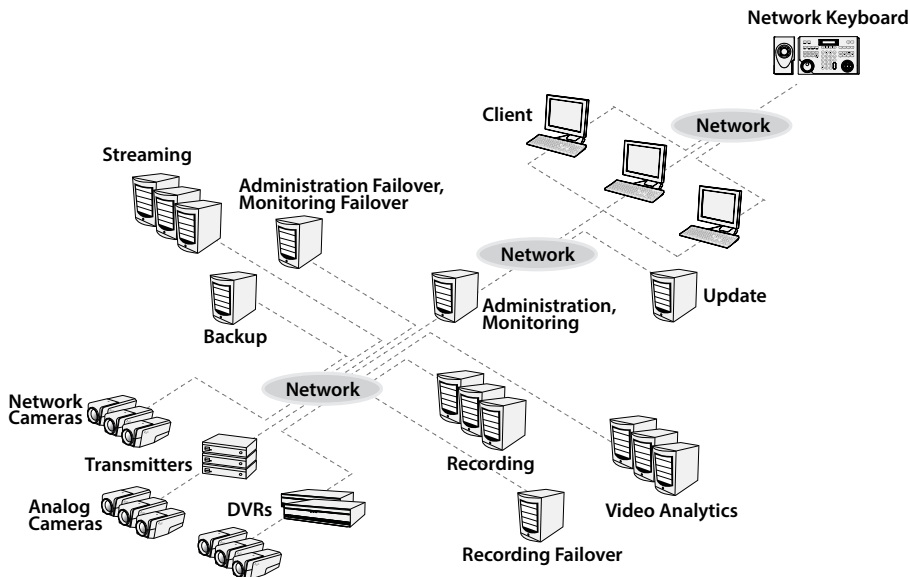
- Number of services and channels that streaming is available for:
 - Service Registration: One to four streaming services (the number of streaming services that can be registered differs depending on the type and number of WIBU-Keys purchased)
 - Streaming: The number of channels that can be streamed equals the number of channels that can be recorded unless streaming WIBU-Keys have been added (maximum of 512 to 2,048 channels depending on the type and number of the WIBU-Keys when WIBU-Keys have been added).



- This product includes software developed by the OpenSSL Project for use in the OpenSSL Toolkit (<http://www.openssl.org/>).
- The software included in this product contains some Open Sources. You may obtain the complete corresponding source code from us. See the Open Source Guide on the software CD (OpenSourceGuide\OpenSourceGuide.pdf) or as a printed document included along with this document.

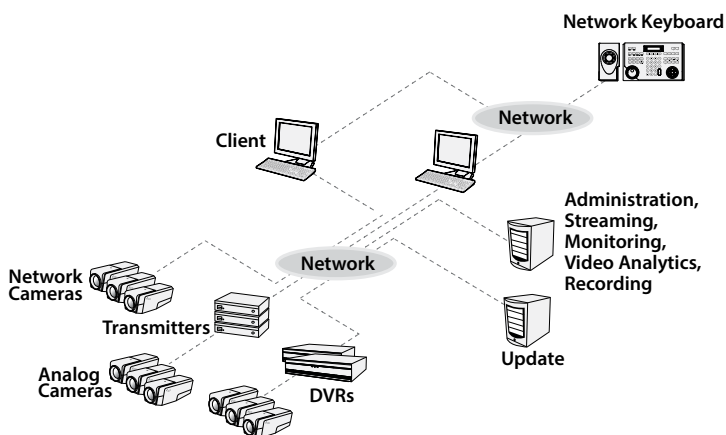
System Diagram

Multi-Server



- The administration service and monitoring service can run on separate PCs.
- The update service can run on a client PC or a PC with other IDIS Solution Suite service programs installed.

Single-Server



- When 256 or more devices are registered, it might take several minutes or longer to change the settings of the Setup program.
- It is suggested that you run the recording, streaming and video analytics services on separate PCs.
- The update service can run on a client PC or a PC with other IDIS Solution Suite service programs installed.

Part 2 - Installation

Product Information

Package Contents

- Installation CD
- User's Manual
- WIBU-Key (USB Dongle)
- ☒ • Up to four WIBU-Keys can be recognized by one administration server.
- If a WIBU-Key is disconnected from an administration server, the IDIS Solution Suite program will not operate properly.
- Stop running all services before connecting or disconnecting a WIBU-Key.

System Requirements

Server System

	Recommended
OS	Microsoft® Windows® XP 32-bit/Vista (Home Standard, Business, Ultimate, Enterprise), Microsoft® Windows® 7 (Home Premium, Professional, Ultimate), Microsoft® Windows® 8 (Pro, Enterprise), Microsoft® Windows® Server 2003/2008
CPU	Intel Core II Quad 8200 2.33 GHz/Intel Xeon 3.0 GHz or faster
RAM	2GB or more
VGA	AMD Radeon™ HD 2400 or NVIDIA GeForce FX5500 (AMD recommended) (1024x768, 24bpp or higher)
HDD	2GB or more free space for each service (for example, 4GB or more free space when installing administration and monitoring services)
LAN	Gigabit Ethernet or faster

Client System

	Recommended	Minimum
OS	Microsoft® Windows® 7 64-bit (Home Premium, Professional, Ultimate) (Microsoft® Windows® 8 (Pro, Enterprise) compatible)	Microsoft® Windows® XP Home SP 3
CPU	Intel Core II Quad 8200 2.33 GHz or faster	Intel Pentium IV 3.0 GHz or faster
RAM	2GB or more	1.5 GB or more
VGA	AMD Radeon™ HD 3650 or NVIDIA GeForce 8400GS (AMD recommended) (1024x768, 24bpp or higher)	AMD Radeon™ HD 2400 or NVIDIA GeForce FX5500 (AMD recommended) (1024x768, 24bpp or higher)
HDD	350 MB or more free space	350 MB or more free space
LAN	Gigabit Ethernet or faster	10/100 Mbps Ethernet or faster



- In this document, the **Server or Server System** refers to a PC on which a IDIS Solution Suite service is running. The **Client System** refers to a PC running the Client program.
- The IDIS Solution Suite program is a 32-bit application. When you install it on a 64-bit of Microsoft® Windows® Vista or later operating system, it is installed and operates in 32-bit compatibility mode.
- It is recommended to add a new unformatted hard disk drive to ensure stable recording. If you are setting up a hard disk drive which contains data, however, you are to delete partition(s) and the file system in advance after formatting. Refer to the PC/server's user manual or consult with the PC/server manufacturer for details about how to format or delete the partition(s) and file system.

Installation



- It is recommended to install the recording, streaming and video analytics services on separate PCs for better performance of video recording, monitoring and playback.
- Disable your PC's Windows power saving function:
Start menu → **Power Options** → set both **Turn off the display** and **Put the computer to sleep to Never** (**Power Options** → **Power Schemes** tab → set both **Turn off monitor** and **Turn off hard disks to Never** when using the Microsoft® Windows® XP operating system).



If an older version of IDIS Solution Suite software is installed on your computer, a screen appears asking you to upgrade the software. In this case, you are required to upgrade the software according to the instructions in the screen.

Server System

Administration Server

- 1 Insert the software CD in the administration server.
- 2 Run the **Setup.exe** file in the **Setup** folder of the software CD.



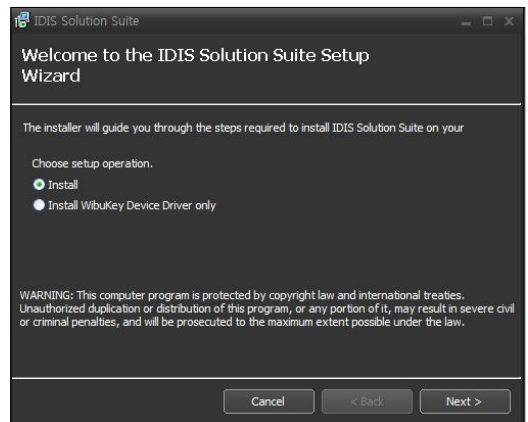
The **User Account Control** window might appear when using the Microsoft® Windows® Vista or later operating system. Click **Allow** and install the software following the instructions.

- 3 Select the language in which to run the program and then click **OK**.

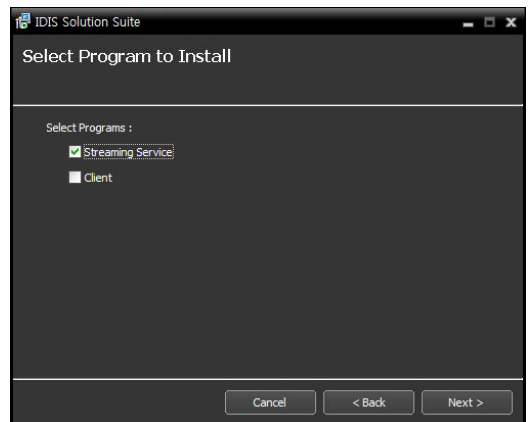


- To properly display the selected language, your PC's operating system should be set to support the selected language.
- To change the IDIS Solution Suite program's language after the software has been installed, select **Language Selector** in the **IDIS Solution Suite** → **Utility** folder of the **Start** menu before running the **IDIS Solution Suite** program.

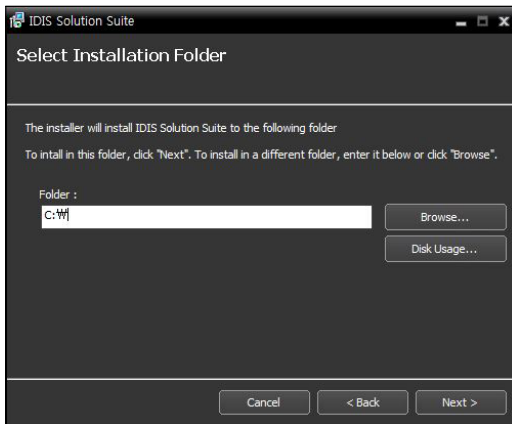
- 4 When the following screen appears, select **Install** and click **Next**.



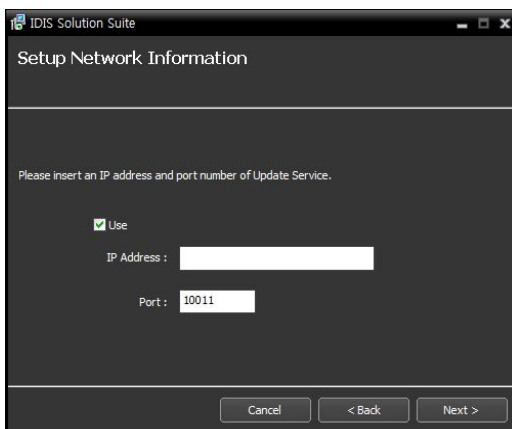
- 5 Select **Streaming Service**, and click **Next**.



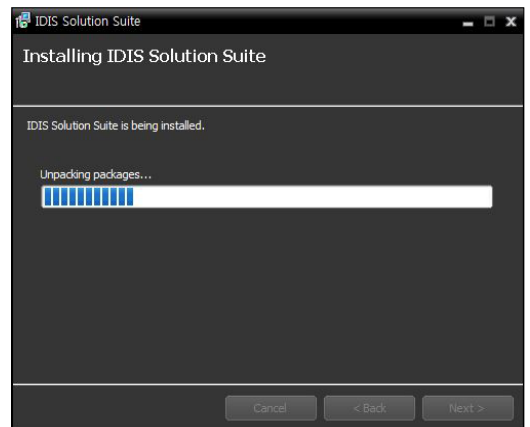
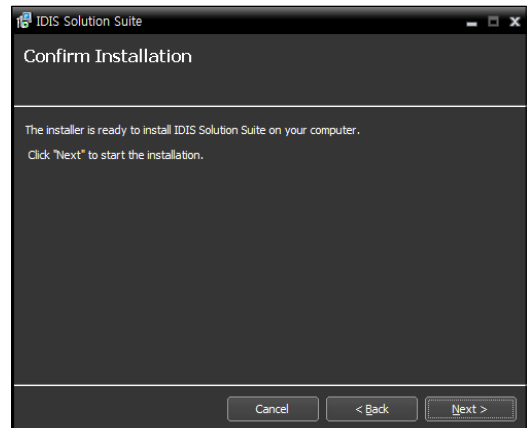
- 6 Designate the folder path to install the services. Clicking the **Disk Cost...** button shows the available and required disk space for each hard disk drive for the installation. Then click **Next**.



- 7 It is required to enter the IP address and port number of the administration server. You can change the settings in the Service Manager program after completing installation if necessary. When the installation is complete, the streaming service is connected to the administration service via the network if both services are operating.

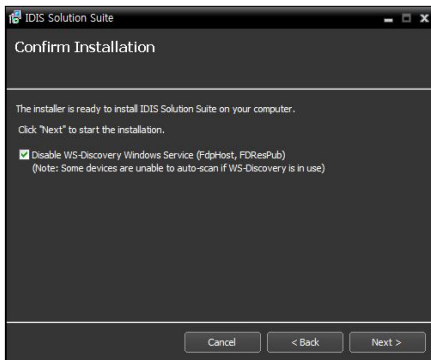


- 8 When the following screens appear, click **Next**.

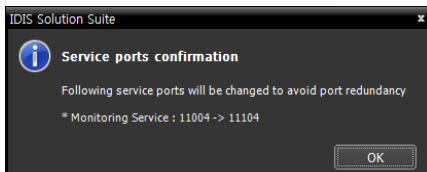




- The following screen appears when using Microsoft® Windows® Vista or later operating systems. It is recommended that you check the **Disable WS-Discovery Windows Service (fdPHost, FDResPub)** box. If you do not check the box, the IDIS Solution Suite program cannot auto-scan devices using ONVIF™ Conformance protocol when scanning devices for device registration.

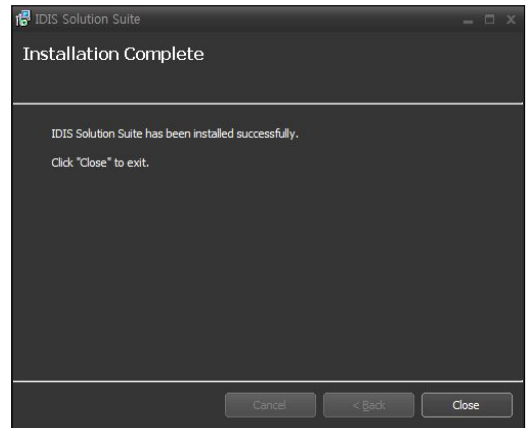



- The following screen appears when the port number of the service being installed is already in use, and the screen displays the port number that will be changed. The changed port number will be applied when the service starts operating after installation.



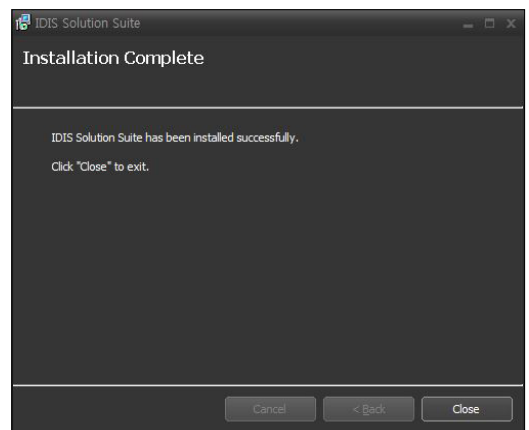
- .NET Framework** and the **Visual C++ Runtime Libraries** are installed automatically, and it may take some time. This installation step will be skipped if the programs are already installed on your computer.


- 9 When the following screen appears, click the **Close** button to complete the installation.



- After successfully installing the services, the services, Service Manager program (the  icon is displayed in the notification area of the task bar) and Setup program run automatically.

- 10 Connect WIBU-Keys to the administration server.



- After successfully installing the services, the services, Service Manager program (the  icon is displayed in the notification area of the task bar) and Setup program run automatically.

- 11 Connect WIBU-Keys to the administration server.

Client System

- 1 Insert the software CD in the Client PC.
- 2 Run the **Setup.exe** file in the **Setup** folder of the software CD.

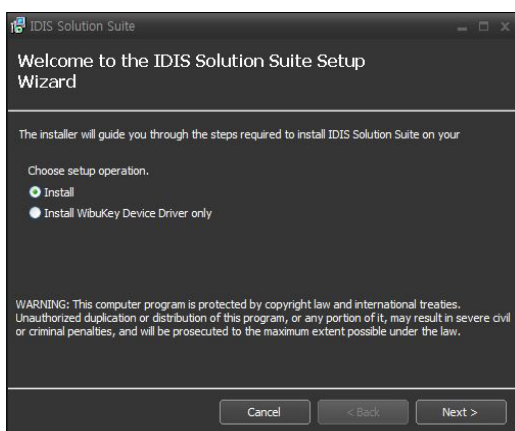
- ☒ The **User Account Control** window might appear when using the Microsoft® Windows® Vista or later operating system. Click **Allow** and install the software following the instructions.

- 3 Select the language in which to run the program and then click **OK**.

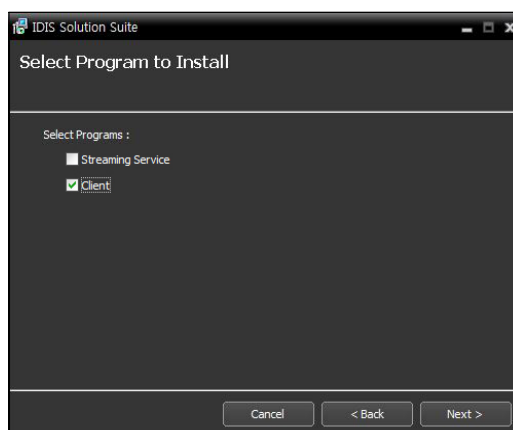


- ☒ • To properly display the selected language, your PC's operating system should be set to support the selected language.
- To change the IDIS Solution Suite program's language after the software has been installed, select **Language Selector** in the **IDIS Solution Suite** → **Utility** folder of the **Start** menu before running the **IDIS Solution Suite** program.

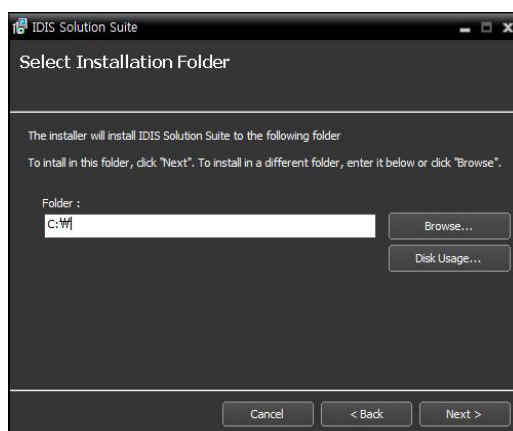
- 4 When the following screen appears, select **Install** and click **Next**.



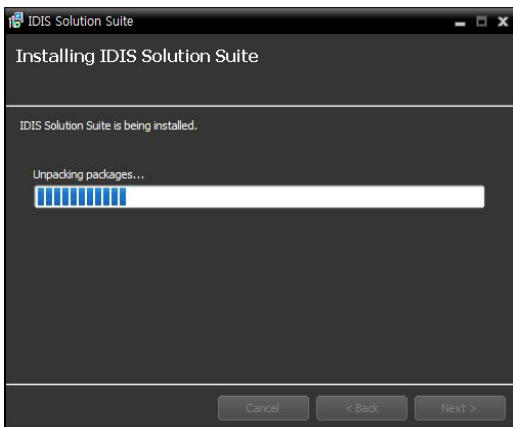
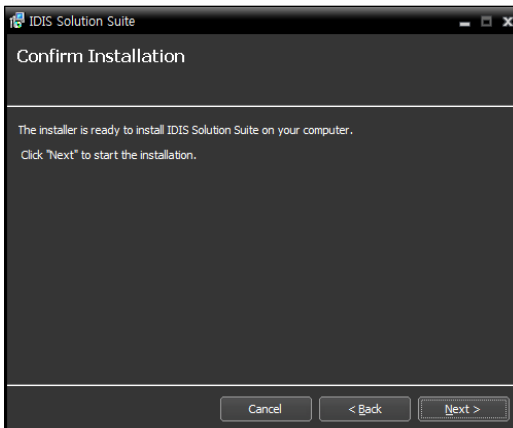
- 5 Select **Client** and click **Next**.



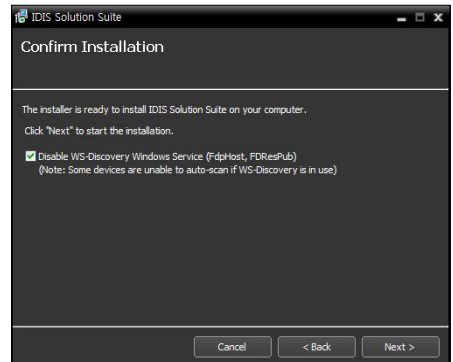
- 6 Designate the folder path to install the Client program. Clicking the **Disk Cost...** button shows the available and required disk space for each hard disk drive for the installation. Then click **Next**.



7 When the following screens appear, click **Next**.

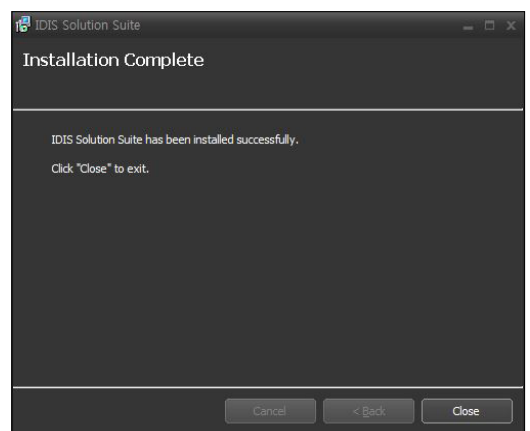


- The following screen appears when using Microsoft® Windows® Vista or later operating systems. It is recommended that you check the **Disable WS-Discovery Windows Service (fdpHost, FDResPub)** box. If you do not check the box, the IDIS Solution Suite program cannot auto-scan devices using ONVIF™ Conformance protocol when scanning devices for device registration.



- **.NET Framework** and the **Visual C++ Runtime Libraries** are installed automatically, and it may take some time. This installation step will be skipped if the programs are already installed on your computer.


8 When the following screen appears, click the **Close** button to complete the installation.



Uninstall

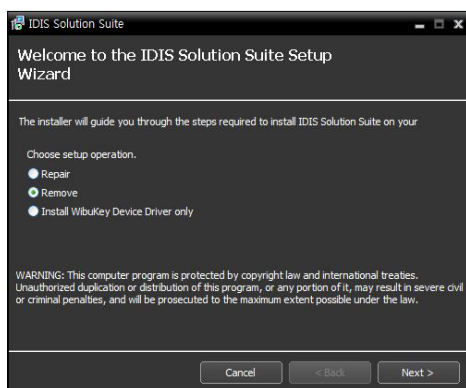
- 1 Stop running the services and Client program first.

☒ The IDIS Solution Suite software might not be uninstalled correctly if you uninstall it while the services or Client program is running.

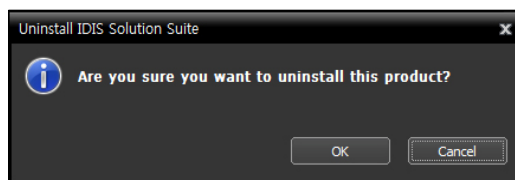
 **The IDIS Solution Suite software should be uninstalled following the procedures below. If you delete the installation folder manually, the IDIS Solution Suite software cannot be uninstalled or reinstalled.**

- 2 Go to the **Start** Menu, and click **IDIS Solution Suite**. Click **Uninstall IDIS Solution Suite**.

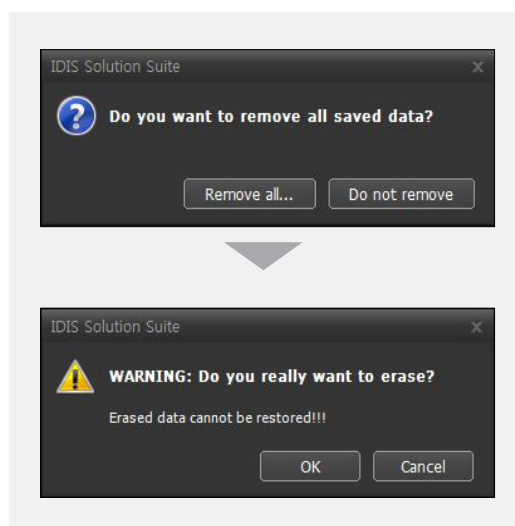
☒ You can uninstall the software by using the software CD. Insert the software CD in the server or Client PC and run the **Setup.exe** file. Select **Remove** and click **Next**.



- 3 Click **OK** when the following screen appears.



- 4 Click the **Remove All** or **Do not remove** button when the following screen appears. Clicking the **Remove All** button deletes all saved data including recorded video and previous settings in the system. Clicking the **Do not remove** button uninstalls the software without deleting any saved data in the system and keeps all saved data in the system.




☒ The deleted data cannot be restored once the data is deleted.

- 5 Click the **OK** button to complete the uninstall process.

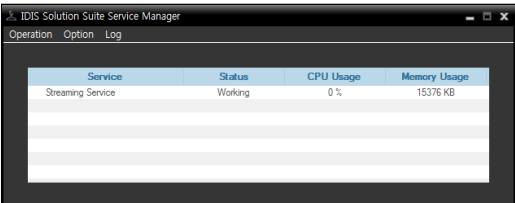
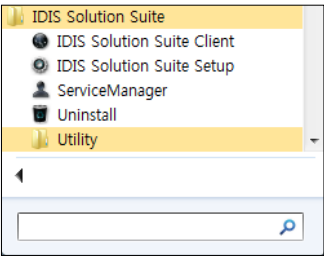
Part 3 - Getting Started

Services should be running on the IDIS Solution Suite servers for the IDIS Solution Suite program to operate.

Running Services

 A **Service** in the IDIS Solution Suite program is a process that runs in the background and performs a specified operation.

When the services are installed, the services run automatically. You can also start or stop running the services manually. Go to the **Start Menu** → Click **IDIS Solution Suite** → Run the **Service Manager** program.



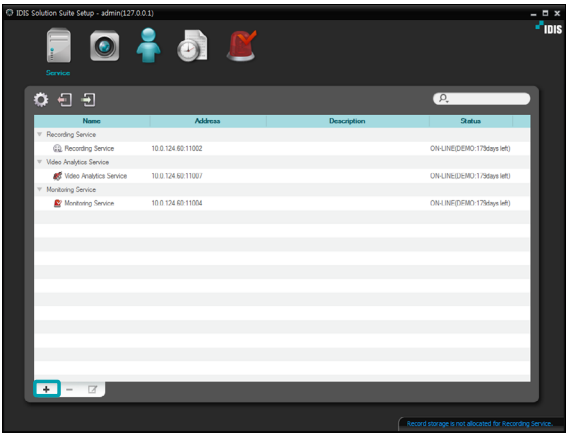
Check the status of services. If any of the services are not listed as **Working** under **Status**, start the services manually. Refer to IDIS Solution Suite Standard User’s Manual for details about the **Service Manager** program.

Registering Services

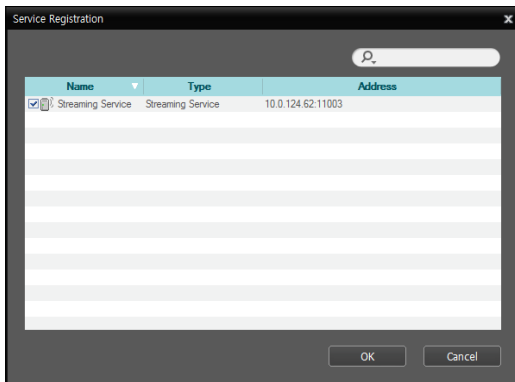
You must register streaming services on the administration service to start the IDIS Solution Suite program.

Go to the **Start Menu** → Click **IDIS Solution Suite** → Run the **IDIS Solution Suite Setup** program and enter login information.

Select the **Service** menu, and then register streaming services following the procedures below.



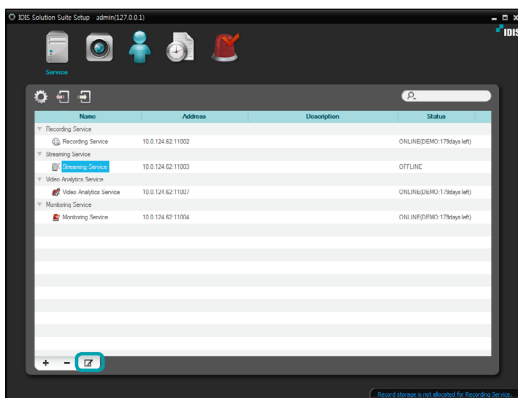
- 1 Click the **+** button at the bottom. The **Service Registration** window appears, and a list of available services is displayed with information about each service.



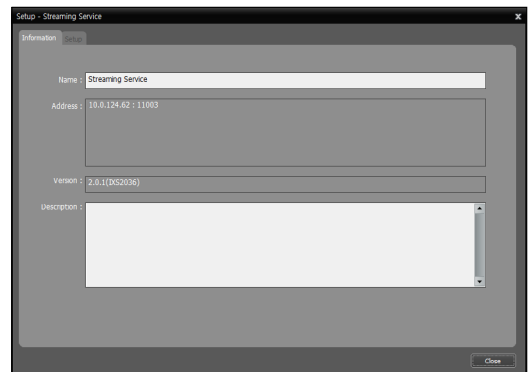
- **Name:** Displays services that are currently connected to the administration service via the network.
- **Type:** Displays the service type.
- **Address:** Display the IP address and port number of each server.

- ☒ Only the services of which the administration server information (**Service Manager** → **Option** → **Server Option**) matches the currently connected administration server are available.

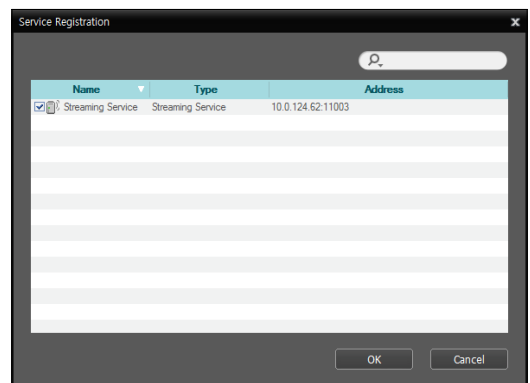
- 2 Select the streaming service to register on the IDIS Solution Suite system, and the selected services are displayed in the service list.



- 3 Select a streaming service and click the ☒ button at the bottom. The **Setup – Streaming Service** window appears. Select the **Information** tab



- 4 Enter the streaming service's name and select the **Setup** tab.



The list of cameras registered on the current streaming service is displayed. Clicking the **Device Setup** button at the bottom allows you to register additional cameras on the current streaming service or removes a camera from the current streaming service.

- 5 Video from the registered cameras on the current streaming service is streamed to the Client system. The way to monitor video is identical to that of the IDIS Solution Suite Standard software. Refer to the IDIS Solution Suite Standard User's Manual for details



IDIS Co., Ltd.

For more information, please visit at
www.idisglobal.com