

# DC-S Series

Operation Manual


*DC-S1163F / DC-S1263F*

*DC-S1163W / DC-S1263W*



*DC-S1163WH / DC-S1263WH*

# Before reading this manual



This is a basic operation manual for installation and use of an IDIS network camera. Users who are using this product for the first time, as well as users with experience using comparable products, must read this operation manual carefully before use and heed to the warnings and precautions contained herein while using the product. Safety warnings and precautions contained in this operation manual are intended to promote proper use of the product and thereby prevent accidents and property damage and must be followed at all times. Once you have read this operation manual, keep it at an easily accessible location for future reference.

- 
- The manufacturer will not be held responsible for any product damage resulting from the use of unauthorized parts and accessories or from the user's failure to comply with the instructions contained in this operation manual.
  - It is recommended that first-time users of this network camera and individuals who are not familiar with its use seek technical assistance from their retailer regarding product installation and use.
  - If you need to disassemble the product for functionality expansion or repair purposes, you must contact your retailer and seek professional assistance.
  - Both retailers and users should be aware that this product has been certified as being electromagnetically compatible for commercial use. If you have sold or purchased this product unintentionally, please replace with a consumer version.

## Safety Symbols

Symbol	Type	Description
	Warning	An important instruction or set of important instructions that can lead to severe injury or even death if not followed.
	Caution	An instruction or set of instruction that can lead to personal injury and/or property damage if not followed.

## In-Text

Symbol	Type	Description
	Caution	Important information concerning a specific function.
	Note	Useful information concerning a specific function.

# Safety Precautions

**WARNING**  
RISK OF ELECTRIC SHOCK  
DO NOT OPEN

**WARNING:** TO REDUCE THE RISK OF ELECTRIC SHOCK,  
DO NOT REMOVE COVER (OR BACK).  
NO USER-SERVICEABLE PARTS INSIDE.  
REFER SERVICING TO QUALIFIED SERVICE PERSONNEL.

## Important Safeguards

**1. Read Instructions**

All the safety and operating instructions should be read before the appliance is operated.

**2. Retain Instructions**

The safety and operating instructions should be retained for future reference.

**3. Cleaning**

Unplug this equipment from the wall outlet before cleaning it. Do not use liquid aerosol cleaners. Use a damp soft cloth for cleaning.

**4. Attachments**

Never add any attachments and/or equipment without the approval of the manufacturer as such additions may result in the risk of fire, electric shock or other personal injury.

**5. Water and/or Moisture**

Do not use this equipment near water or in contact with water.

**6. Placing and Accessories**

Do not place this equipment on an wall or ceiling that is not strong enough to sustain the camera. The equipment may fall, causing serious injury to a child or adult, and serious damage to the equipment. Wall or shelf mounting should follow the manufacturer's instructions, and should use a mounting kit approved by the manufacturer.



This equipment and cart combination should be moved with care. Quick stops, excessive force, and uneven surfaces may cause the equipment and cart combination to overturn.

Do not place this equipment in an enclosed space. Sufficient ventilation is required to prevent an increase in ambient temperature which can cause malfunction or the risk of fire.

**7. Power Sources**

This equipment should be operated only from the type of power source indicated on the marking label. If you are not sure of the type of power, please consult your equipment dealer or local power company.

You may want to install a UPS (Uninterruptible Power Supply) system for safe operation in order to prevent damage caused by an unexpected power stoppage. Any questions concerning UPS, consult your UPS retailer.

**8. Power Cord**

Operator or installer must remove power and TNT connections before handling the equipment.

**9. Lightning**

For added protection for this equipment during a lightning storm, or when it is left unattended and unused for long periods of time, unplug it from the wall outlet and disconnect the antenna or cable system. This will prevent damage to the equipment due to lightning

and power-line surges. If thunder or lightning is common where the equipment is installed, use a surge protection device.

**10. Overloading**

Do not overload wall outlets and extension cords as this can result in the risk of fire or electric shock.

**11. Objects and Liquids**

Never push objects of any kind through openings of this equipment as they may touch dangerous voltage points or short out parts that could result in a fire or electric shock. Never spill liquid of any kind on the equipment.

**12. Servicing**

Do not attempt to service this equipment yourself. Refer all servicing to qualified service personnel.

**13. Damage requiring Service**

- Unplug this equipment from the wall outlet and refer servicing to qualified service personnel under the following conditions:
- A. When the power-supply cord or the plug has been damaged.
  - B. If liquid is spilled, or objects have hit the equipment.
  - C. If the equipment has been exposed to rain or water.
  - D. If the equipment does not operate normally by following the operating instructions, adjust only those controls that are covered by the operating instructions as an improper adjustment of other controls may result in damage and will often require extensive work by a qualified technician to restore the equipment to its normal operation.
  - E. If the equipment has been dropped, or the cabinet damaged.
  - F. When the equipment exhibits a distinct change in performance — this indicates a need for service.

**14. Replacement Parts**

When replacement parts are required, be sure the service technician has used replacement parts specified by the manufacturer or that have the same characteristics as the original part. Unauthorized substitutions may result in fire, electric shock or other hazards.

**15. Safety Check**

Upon completion of any service or repairs to this equipment, ask the service technician to perform safety checks to determine that the equipment is in proper operating condition.

**16. Field Installation**

This installation should be made by a qualified service person and should conform to all local codes.

**17. Correct Batteries**

Warning: Risk of explosion if battery is replaced by an incorrect type. Dispose of used batteries according to the instructions.

**18. Tmra**

A manufacturer's maximum recommended ambient temperature (Tmra) for the equipment must be specified so that the customer and installer may determine a suitable maximum operating environment for the equipment.

## FCC Compliance Statement

THIS EQUIPMENT HAS BEEN TESTED AND FOUND TO COMPLY WITH THE LIMITS FOR A CLASS A DIGITAL DEVICE, PURSUANT TO PART 15 OF THE FCC RULES. THESE LIMITS ARE DESIGNED TO PROVIDE REASONABLE PROTECTION AGAINST HARMFUL INTERFERENCE WHEN THE EQUIPMENT IS OPERATED IN A COMMERCIAL ENVIRONMENT. THIS EQUIPMENT GENERATES, USES, AND CAN RADIATE RADIO FREQUENCY ENERGY AND IF NOT INSTALLED AND USED IN ACCORDANCE WITH THE INSTRUCTION MANUAL, MAY CAUSE HARMFUL INTERFERENCE TO RADIO COMMUNICATIONS. OPERATION OF THIS EQUIPMENT IN A RESIDENTIAL AREA IS LIKELY TO CAUSE HARMFUL INTERFERENCE, IN WHICH CASE USERS WILL BE REQUIRED TO CORRECT THE INTERFERENCE AT THEIR OWN EXPENSE.

**WARNING:** CHANGES OR MODIFICATIONS NOT EXPRESSLY APPROVED BY THE PARTY RESPONSIBLE FOR COMPLIANCE COULD VOID THE USER'S AUTHORITY TO OPERATE THE EQUIPMENT. THIS CLASS OF DIGITAL APPARATUS MEETS ALL REQUIREMENTS OF THE CANADIAN INTERFERENCE CAUSING EQUIPMENT REGULATIONS.

## WEEE (Waste Electrical & Electronic Equipment)

**Correct Disposal of This Product**  
*(Applicable in the European Union and other European countries with separate collection systems)*



This marking shown on the product or its literature, indicates that it should not be disposed with other household wastes at the end of its working life. To prevent possible harm to the environment or human health from uncontrolled waste disposal, please separate this from other types of wastes and recycle it responsibly to promote the sustainable reuse of material resources.

Household users should contact either the retailer where they purchased this product, or their local government office, for details of where and how they can take this item for environmentally safe recycling.

Business users should contact their supplier and check the terms and conditions of the purchase contract. This product should not be mixed with other commercial wastes for disposal.

## Copyright

© 2013 IDIS Co., Ltd.  
IDIS Co., Ltd. reserves all rights concerning this operation manual.  
Use or duplication of this operation manual in part or whole without the prior consent of IDIS Co., Ltd. is strictly prohibited.  
Contents of this operation manual are subject to change without prior notice for reasons such as functionality enhancements.

## Registered Trademarks

IDIS is a registered trademark of IDIS Co., Ltd.  
Other company and product names are registered trademarks of their respective owners.

This product contains software built partially on open-source content. Codes for the corresponding open-source content are available for download. For more information, refer to the software CD (OpenSourceGuide\OpenSourceGuide.pdf) or the open source guide accompanying this operation manual.



# Table of Contents

---

## 1

**Part 1 – Introduction..... 7**

- Product Features .....7
- Accessories.....8
- Overview .....9
  - Indoor and Outdoor.....9
  - Flushed.....11
  - Cable .....12
  - Factory Reset .....13
- Installation.....13
  - Indoor .....13
  - Outdoor .....14
  - Flushed.....15
  - Dimensions .....15

## 2

**Part 2 - Camera Connection ..... 17**

- With DirectIP™ NVR-based Layout.....17
- With non DirectIP™ NVR-based Layout .....18

## 3

**Part 3 - Remote Setup..... 19**

- Camera Protocol.....19
- Remote Setup.....19
- Quick Setup.....20
- System.....20
  - General.....20
  - Date/Time .....21
  - User/Group .....22
- Network .....22
  - IP Address .....23
  - FEN.....23
  - Port/QoS.....24
  - Bandwidth Control.....26
  - Security.....26

4

- IEEE 802.1X .....27
- Video .....27
  - Camera .....27
  - Streaming .....30
  - Webcasting .....31
  - MAT .....32
  - Privacy Masking .....32
  - PTZ .....33
- Audio .....36
  - In/Out .....37
- Event Action .....37
  - Alarm-out.....37
  - Email .....37
  - Remote Callback .....38
  - Audio Alarm .....38
  - FTP Upload .....39
  - Record.....40
- Event .....42
  - Alarm In .....42
  - Motion Detection .....43
  - Trip-Zone .....44
  - Audio Detection .....45
  - Tampering .....46
  - System Event .....47

**Part 4 - IDIS Web.....48**

- Web Live Mode.....50
- Web Search Mode .....52

5

**Part 5 - Appendix.....54**

- Setup Menu Tree (Remote Setup) .....54
- Troubleshooting .....55
- Specifications .....56
- Index .....59

# Part 1 – Introduction

## Product Features

### DC-S1163F / DC-S1263F / DC-S1163W /

**DC-S1263W / DC-S1163WH / DC-S1263WH** are IP-based network cameras that compress and transmit video over ethernet.

You can use the IDIS Discovery program to change network camera settings or the IDIS Solution Suite Compact program to manage multiple network cameras. In addition, the embedded web server (IDIS Web) lets you remotely view live video or scan recorded video using a web browser. In addition, you can use the IDIS Solution Suite Compact to manage network cameras and view/record video.



In this operation manual, the term **Remote System** refers to the computer on which the remote program (IDIS Solution Suite Compact or IDIS Web) is running.

- Supports DirectIP mode working with a DirectIP™ NVR that allows users to simply set up all required configurations without a PC
- Supports ONVIF protocol (v2.4.0)
- Multi-streaming for high-resolution and high-quality video monitoring and simultaneous recording in real-time as well as flexible configurations for those
- Supports H.264 video compression and M-JPEG still image compression algorithms
- Supports 4-stage video compression rate and multiple compression resolutions
- Two-way audio communication support for remote audio dialog
- Video stream buffering to counter pre-/post-event buffering and network delays for improved network recording reliability
- Remote monitoring via web browser or remote software
- Automatic web casting code (HTML) generation
- Up to 10 simultaneous remote monitoring connections
- IP filtering, HTTPS, SSL, IEEE 802.1X, and configurable user authority levels for greater security
- Network bandwidth limitation and MAT features for more efficient use of network bandwidth
- Easy network access via UPnP (Universal Plug and Play) function and embedded mDNS (Multicast DNS) protocol
- Wide dynamic range compensation (Digital WDR) for improved video quality in high-contrast situations
- Slow shutter support for improved low-lighting video capture performance
- Day & Night feature (built-in IR cut filter changer)
- Quick and easy firmware upgrade over the network
- Redundant firmware and auto recovery features for improved system stability
- Network-based integrated management of multiple network cameras
- Multiple event detection modes: Alarm-in, motion detection, trip zone, audio detection, and tampering
- Backup storage on a microSD card as a safeguard against data loss during network interruptions
- Supports 12 VDC, 24 VAC and PoE (Power over Ethernet)
- Video out feature (selectable NTSC/PAL)
- Supports zoom function using an optical zoom lens
- Pan/Tilt control with a micro stepping motor
- Features a built-in heater for continued use in sub-zero temperature conditions (*DC-S1163WH / DC-S1263WH models only*)
- IP66-level for waterproof and dustproof features (*Not applicable to DC-S1163F / DC-S1263F models*)



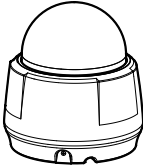
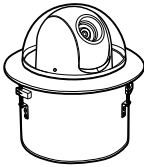
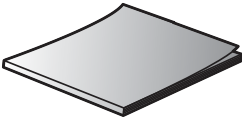
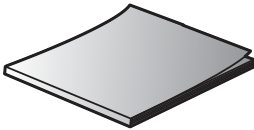
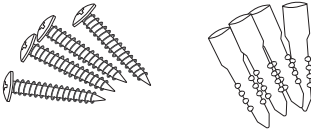
Remote monitoring and recording via multistreaming are available using the IDIS Solution Suite Compact program. For more information on using IDIS Solution Suite Compact, refer to its **operation manual**.



There is a limit to the number of users allowed to connect remotely via the Internet at the same time.

Accessories

Upon purchasing the product, check inside the box to make sure all the following accessories are included. External appearances and colors of the accessories may vary depending on the model.

	
DC-S1163W / DC-S1263W / DC-S1163WH / DC-S1263WH	DC-S1163F / DC-S1263F
Network Camera	
	
Open Source Guide	Quick Guide
	
Screws (4 ea.)	

☒ The screws are not provided for *DC-S1163F / DC-S1263F* models.

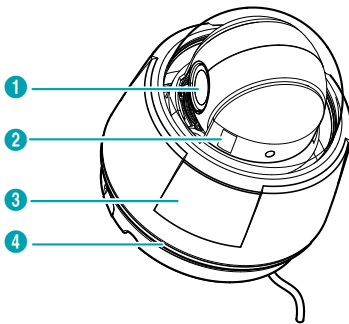
## Overview



Product color and design may vary depending on the model.

## Indoor and Outdoor

### Body



①	Lens
②	SD Card Slot
③	Dome Cover
④	Waterproof Sealing (black rubber)

#### ① Lens

Optical zoom lens is mounted.

#### ② SD Card Slot

Used to insert a microSD card into the camera. (An SLC (Single Level Cell) or MLC (Multi Level Cell) card by SanDisk or Transcend is recommended) Remove the dome cover in order to remove or insert the SD memory card. Make sure that the waterproof sealing is joined properly when reconnecting the dome cover; otherwise, the IP66 level is not guaranteed.



- To remove/insert the SD memory card or perform the factory reset, make sure that the waterproof sealing is screwed to the dome cover tightly when reconnecting the dome cover. Otherwise, the IP66 level is not guaranteed. For more information, contact your product retailer.
- Do not remove the SD card while the system is in operation. Removing the card while the system is in operation can cause the system to malfunction and/or corrupt data stored on the SD card.
- An SD card is a consumable product with a finite service life. Prolonged use will damage the card's memory sectors and result in data loss or memory card failure. Test the SD card regularly and replace it whenever necessary.

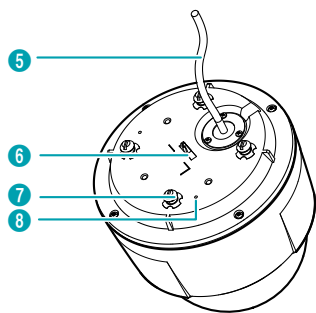
#### ③ Dome Cover

Protects the inner parts of camera.

#### ④ Waterproof Sealing

Resists the ingress of water.

Body – Bottom Side View



5	Cable
6	Safety Wire Ring
7	Install Screw
8	M3 Screw Hole

5 Cable

Refer to the **Cable** on page 12.

6 Safety Wire Ring

Secures the body to the bracket or the bracket to the body. Prevents the body or bracket from falling on to the floor when detached from the body and bracket.  $\text{⏏}$  (frame ground) is marked beside the safety wire screw hole of the indoor bracket. When fastening the camera body to the indoor bracket, ground the camera by using the grounding clip provided with the camera. It is recommended that you use the camera after grounding it.

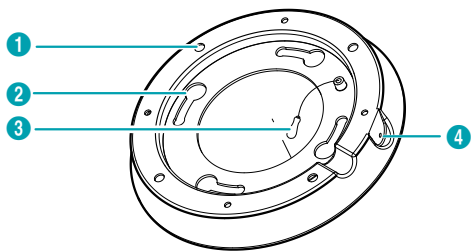
7 Install Screw

When installing an indoor camera, it secures the body to the indoor bracket.

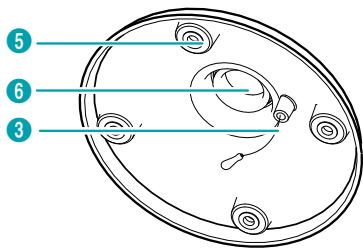
8 M3 Screw Hole

When installing an outdoor camera, use the provided M3 screws to secure the sun shield on to the camera body.  $\text{⏏}$  (frame ground) is marked beside the M3 screw hole of the camera body. When fastening the camera body to the indoor bracket, ground the camera by using the grounding clip provided with the camera. It is recommended that you use the camera after grounding it

Indoor Bracket



Outdoor Bracket\*



The outdoor bracket is purchased separately. Ask your dealer or distributor about purchasing it.

1	Wall/Ceiling Installation Hole
2	Install Screw Hole
3	Safety Wire
4	M4 Screw Hole
5	M5 Screw Hole
6	Pipe Hole

1 Wall/Ceiling Installation Hole

Used to screw the camera in place on a wall or a ceiling.

2 Install Screw Hole

When installing an indoor camera, it secures the body to the indoor bracket.

③ **Safety Wire**

Secures the body to the bracket or the bracket to the body. Prevents the body or bracket from falling on to the floor when detached from the body or bracket.

④ **M4 Screw Hole**

When installing an indoor camera, it secures the body to the indoor bracket.

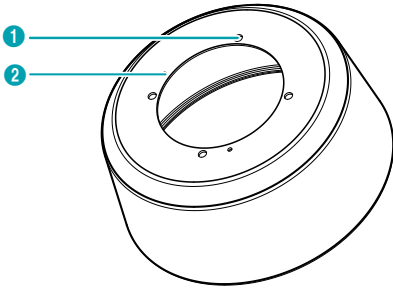
⑤ **M5 Screw Hole**

When installing an outdoor camera, it secures the sun shield to the outdoor bracket.

⑥ **Pipe Hole**

When installing an outdoor camera, it secures the pipe, which the cable assembly goes through, to the outdoor bracket.

Outdoor Sun Shield\*



☒ The outdoor sun shield is purchased separately. Ask your dealer or distributor about purchasing it.

①	M5 Screw Hole
②	M3 Screw Hole

① **M5 Screw Hole**

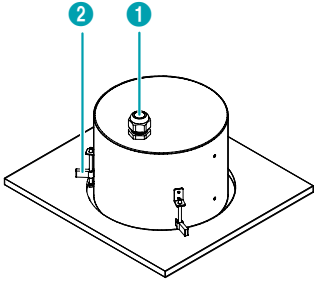
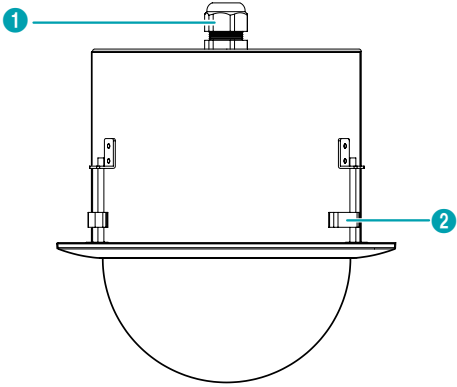
When installing an outdoor camera, it secures the sun shield to the outdoor bracket.

② **M3 Screw Hole**

When installing an outdoor camera, use the provided sun shield screws to secure the sun shield on to the camera body.

**Flushed**

Housing



①	Cable Grand
②	Mounting Clamp

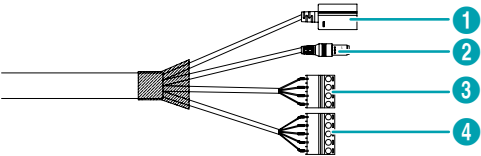
① **Cable Grand**

For routing cables and wires.

② **Mounting Clamp**

Secures the camera to the ceiling.

# Cable



①	Network Port
②	Power
③	Alarm In/Out
④	Audio In/Out, Video Out

## ① Network Port

Connect a network cable with an RJ-45 connector to this port. If using a PoE switch, you can supply power to the camera using an ethernet cable. For more information on PoE switch use, refer to the switch manufacturer's operation manual. You can configure, manage, and upgrade this camera and monitor its images from a remote computer over the network. For more information on network connection setup, refer to the **IDIS Discovery operation manual**.

## ② Power

Connect the power adapter.

## ③ Alarm In/Out

- **ALI:**Connect an alarm-in device to this port. (Mechanism: Choose between an NC (Normally Closed) type or an NO (Normally Open) type) → Connect a mechanical or electrical switch to the alarm in port and the GND (ground) connector. Alarm in range is 0V to 5V. In order to detect alarm input from an electrical switch, the signal must be higher than 4.3V from an NC switch or less than 0.3V from an NO switch and must last for longer than 0.5 seconds.
- **NO:** Connect an alarm out device's mechanical or electrical switch to the alarm out port and the COM (Common) connector. (Supported Types: NO (Normally Open), Electrical specifications: 0.3A sync at 125 VAC, 1A sync at 30 VDC)

## ④ Audio In/Out, Video Out

- **L\_I:** Connect an audio source to this port. (line in)
- **L\_O:** Connect an amplifier to this port (line out). This device does not feature a built-in audio amplifier unit and therefore requires the user to purchase a separate speaker system with a built-in amplifier.
- **V\_O, GND:** Connect the cable's signal line and ground line to these ports and the connector on its opposite end to a monitor. Use these ports for previewing video and not monitoring video. Go to Remote Setup (Video – Camera menu > Miscellaneous tab) and choose a video out signal. (NTSC or PAL)



- Check your local laws and regulations on making video or audio recordings. The user will be held liable for any violation of the law. (Article 25-5 of the Personal Information Protection Act: Operators of image data processing devices may not operate such devices for purposes other than as originally intended during device installation, place such devices at locations other than as originally intended, or use such devices to record audio.)
- When switching over from 12 VDC to PoE as the power source, the system will be rebooted once the power adapter is disconnected.
- Organize the power cable so that it will not cause people to trip over or become damaged from chairs, cabinets, desks, and other objects in the vicinity. Do not run the power cable underneath carpet or a rug or plug the cable into a power outlet shared by a number of other devices.
- The network connector is not designed to be connected directly with cable or wire intended for outdoor use.



## Factory Reset

Only use the factory reset switch to restore the camera to its factory default settings.

✓ The factory reset switch is inside of the camera. Ask your dealer or distributor for details.

⚠ A factory reset will clear all camera settings configured by the user.

- 1 Shut off the power supply, separate the dome cover. Insert a straight pin into the switch hole, and press down on the reset switch.
- 2 Hold the switch down and reconnect the power adapter.
- 3 After connecting the power adapter, wait 5 seconds and then take out hands from the switch.
- 4 The device will go through the resetting process and reboot. All camera settings will be restored to their factory defaults after the reboot.
- 5 Reconnect the dome cover.

It's also possible to do a factory reset by pressing and releasing the reset switch while the camera is turned on or using the IDIS Discovery program from a remote location. A factory reset will reboot the system. For more information on factory reset, refer to the **IDIS Discovery operation manual**.

⚠ Make sure that the waterproof sealing is joined properly when reconnecting the dome cover; otherwise, the IP66 level is not guaranteed.

## Installation

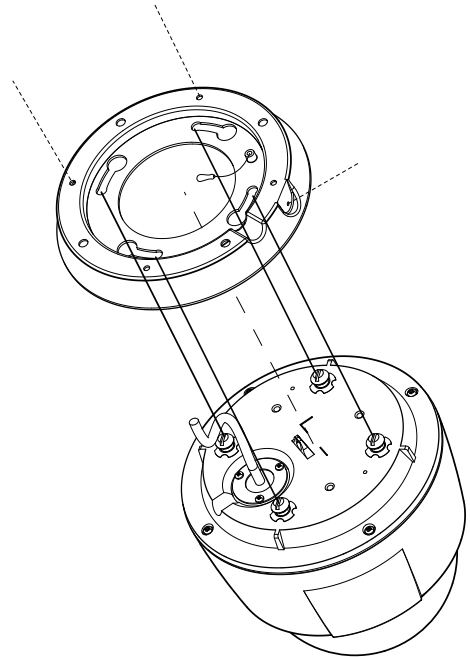
Installation of this product does not require the use of special tools.

For more information on other devices comprising the overall system, refer to their respective **installation manuals**.

✓ Product color and design may vary depending on the model.

⚠ Check the wall or ceiling to see if it needs to be reinforced. The camera may fall off if the wall or ceiling is not strong enough to support its weight.

## Indoor



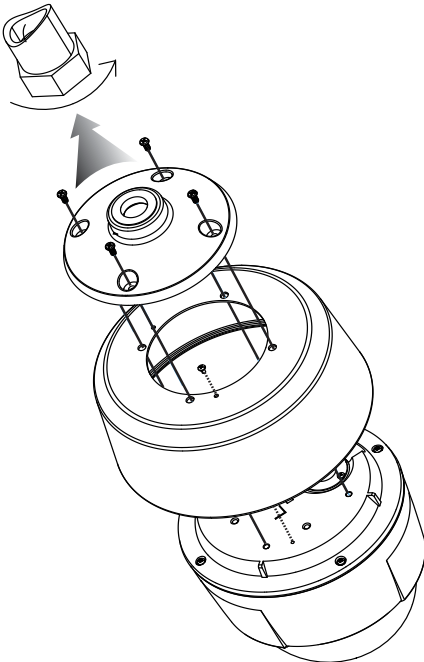
- 1 Screw the indoor bracket to the wall or ceiling by using the wall/ceiling mounting screws provided with the camera.
- 2 Make a cable hole in the wall or ceiling.

- 3 Hook the safety wire of the bracket on the safety wire ring of the camera body.
- 4 Connect external devices, the network cable, and the power adapter.
- 5 Connect the camera body to the indoor bracket. Fix the install screws of the camera body up to the install screw holes of the bracket, and then turn the camera body by 25° in the clockwise direction.
- 6 Fasten the camera body to the bracket by tightening the M4 screw provided with the camera to the M4 screw hole of the bracket.
- 7 Supply the power.

## Outdoor

### In case that a universal nut is attached to a pipe

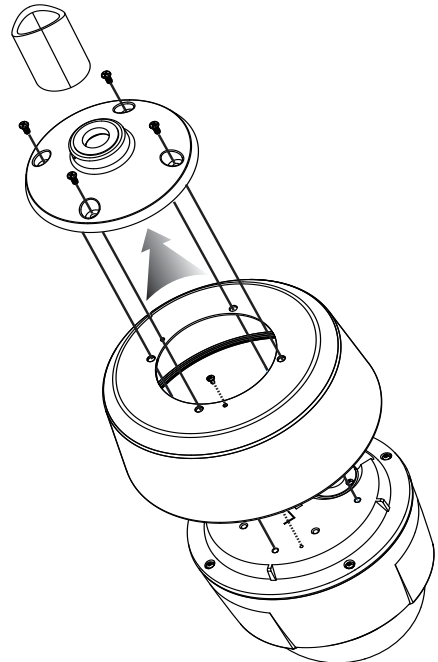
Connect the sun shield and outdoor bracket first, then connect it to the pipe as follows:



- 1 Remove the install screw from the camera body.
- 2 Screw the sun shield to the camera body by using the M3 screws provided with the camera.
- 3 Hook the safety wire of the outdoor bracket on the safety wire ring of the camera body.
- 4 Use the provided M5 screws to secure the outdoor bracket on to the sun shield.
- 5 Connect the cable from the camera to the pipe.
- 6 Turn the universal nut to connect the camera to the pipe.
- 7 Connect external devices, the network cable, and the power adapter.
- 8 Supply the power.

### In case that a universal nut is not attached to a pipe

Connect the sun shield to the outdoor bracket as follows:



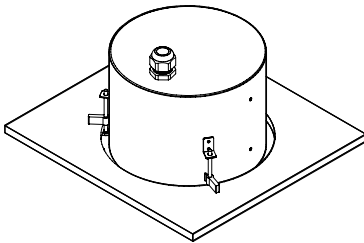
- 1 Remove the install screw from the camera body.
- 2 Screw the sun shield to the camera body by using the M3 screws provided with the camera.
- 3 Assemble the outdoor bracket to the pipe by turning the outdoor bracket.
- 4 Hook the safety wire of the outdoor bracket on the safety wire ring of the camera body.
- 5 Connect the cable from the camera to the pipe.
- 6 Use the provided M5 screws to screw the sun shield to the outdoor bracket.
- 7 Connect external devices, the network cable, and the power adapter.
- 8 Supply the power.

- 3 Turn the housing dome cover counterclockwise to remove the housing dome cover from the housing can.
- 4 Insert the housing into the ceiling and turn the screws of three clamps clockwise. The clamps are laid over the ceiling tile and the housing is held in the ceiling.
- 5 Connect the housing dome cover to the housing can and turn it clockwise to secure the dome cover to the housing.
- 6 Supply the power.



The ceiling tile cannot be thicker than 1.3" (35mm).

## Flushed



The camera is mounted in the housing.

- 1 Remove the ceiling tile from the ceiling. Draw circle whose diameter is 7.87" (200 mm) on the tile. Cut the circle out of the ceiling tile.
- 2 Connect external devices, the network cable, and the power adapter.

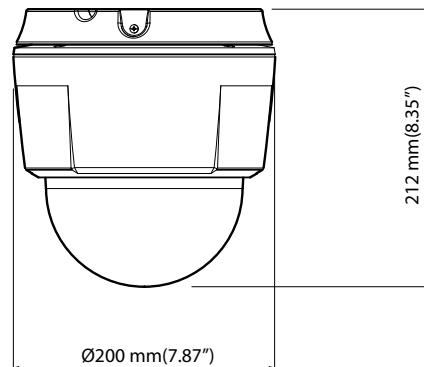


The ceiling tile cannot be thicker than 1.3" (35mm).

## Dimensions

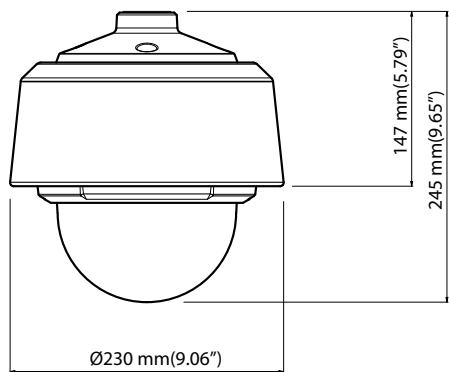
### Indoor

DC-S1163W / DC-S1263W models



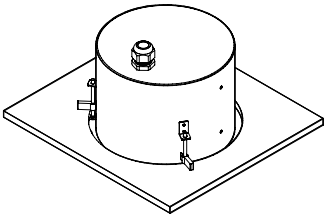
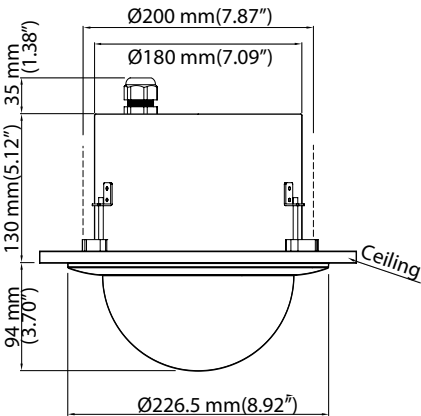
Outdoor

DC-S1163WH / DC-S1263WH models



Flushed

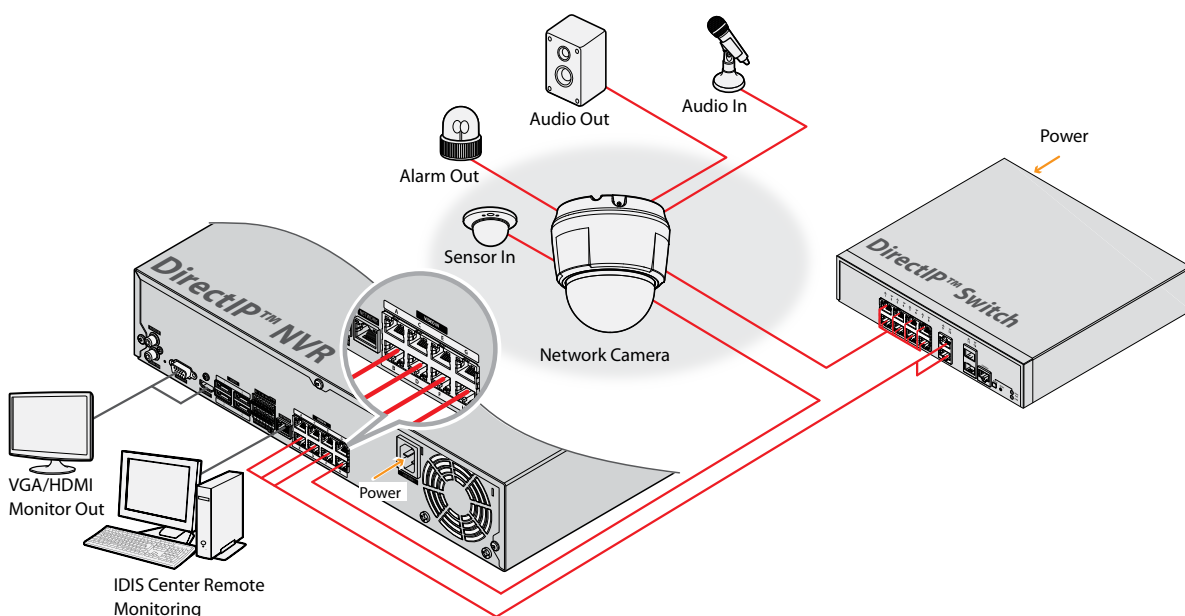
DC-S1163F / DC-S1263F models



## Part 2 - Camera Connection

Use the camera by connecting to DirectIP™ NVR or non DirectIP™ NVR, VMS such as IDIS Solution Suite Compact.

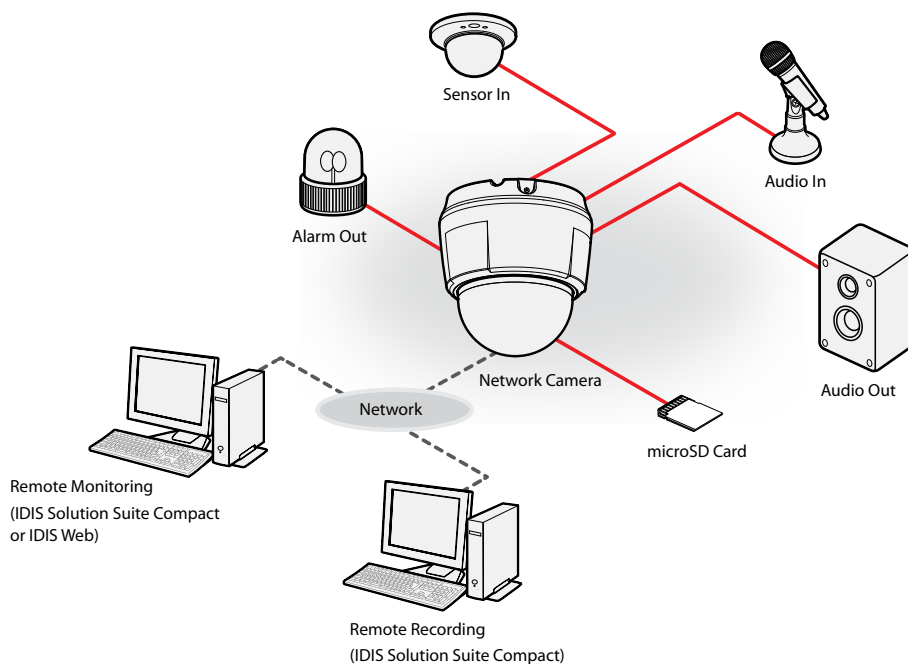
### With DirectIP™ NVR-based Layout



DirectIP NVR makes it easy to use cameras without extra network configurations. Each camera can be controlled via the DirectIP™ NVR setup menu, without any PC. For detailed camera settings, please see the camera setting pages of DirectIP™ NVR manual.

**For users using the camera with DirectIP™ NVR connection, do not need to consider contents after page 16.**

## With non DirectIP™ NVR-based Layout



Control the camera over the network from software installed on a computer.  
Ideal for using the camera over the network from a remote location.

**The contents after page 17 are only for users using the camera with non DirectIP™ NVR connection or VMS connection such as IDIS Solution Suite Compact.**

# Part 3 - Remote Setup

Configure basic network camera settings and all other system settings.

✓ Screen images may vary depending on the model.

## Camera Protocol

Camera supports **DirectIP™** and **IDIS** protocols.

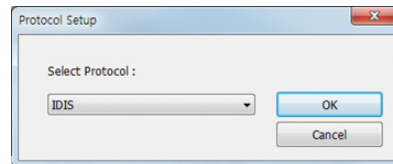
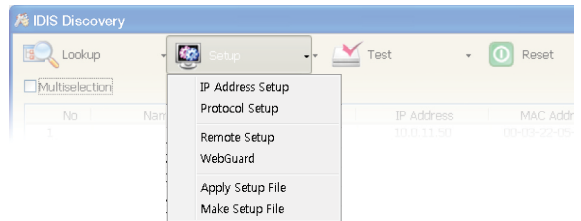
- **DirectIP™** protocol:
  - Using with a DirectIP™ NVR enables camera use without the need to configure network settings.
  - The DirectIP™ NVR also allows you to control all camera settings directly from the NVR, without the need for a computer.

✓ For more information on configuring camera settings from a DirectIP™ NVR, refer to the DirectIP™'s **operation manual**.

- **IDIS** protocol:
  - Control the camera over the network from software installed on a computer or a separate NVR.
  - Ideal for using the camera over the network from a remote location.

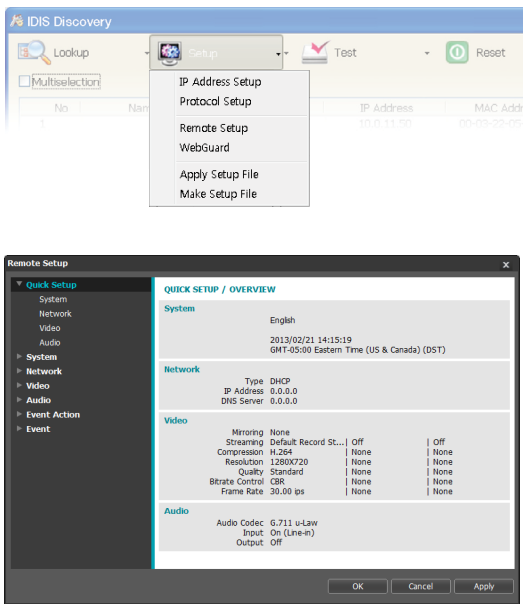
## Remote Setup

- 1 Launch the IDIS Discovery program and then from the main screen select a network camera whose protocol you wish to change.
- 2 Click on the **Setup** icon and then select **Setup** → **Protocol Setup**. A **Protocol Setup** screen will appear.
  - Alternatively, you can select **Network Camera** from the main screen and then right-click to access the **Protocol Setup** screen.

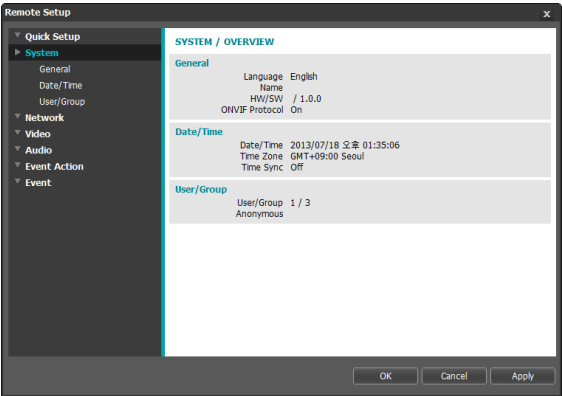


- 3 From the **Protocol Setup** screen, select the **IDIS** and then click OK.
- 4 Click on the **Setup** icon and then select **Setup** → **Remote Setup**. A **Remote Setup** screen will appear.
  - Alternatively, you can select **Network Camera** from the main screen and then right-click to access the **Remote Setup** screen.

- ✓
- This operation manual has been composed based on IDIS protocol use.
  - System settings can also be changed using a remote program.

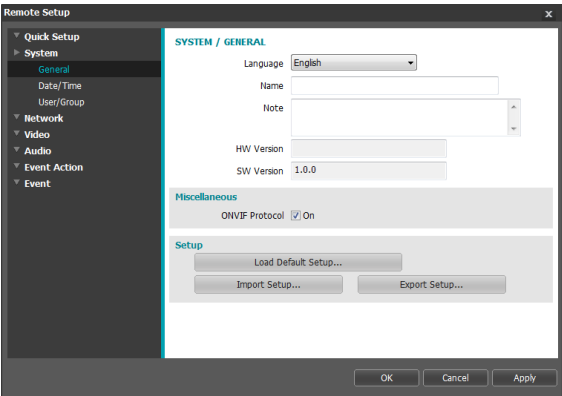


## System



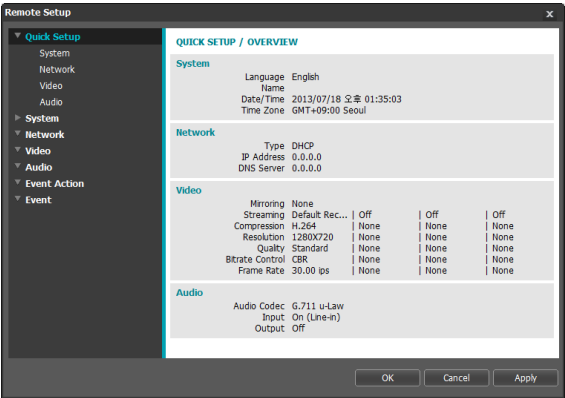
Change the camera's system information, add users/groups, and/or import/export settings.

## General



- **SYSTEM/GENERAL**
  - **Language:** Select the language you wish to use for remote setup.
  - **Name:** Enter a name for the camera. (Up to 31 alphanumeric characters, including spaces)
  - **Note:** Enter a description for the camera.
  - **HW Version/SW Version:** Indicates the camera's hardware and software versions.

## Quick Setup



Quick Setup allows you to set up **System, Network, Video, Audio**, and other basic settings needed for camera use.



## • Miscellaneous

- **ONVIF Protocol:** Select to enable ONVIF protocol use. However, ONVIF Protocol is available only to users belonging to the standard user groups (**Administrator**, **Operator**, and **User**). When you have connected to the camera by using the ONVIF protocol, only the currently enabled streams or events are supported and you cannot change it. There may be some more settings that cannot be changed, too. If you want to change those settings, connect to the camera by using the INIT program.

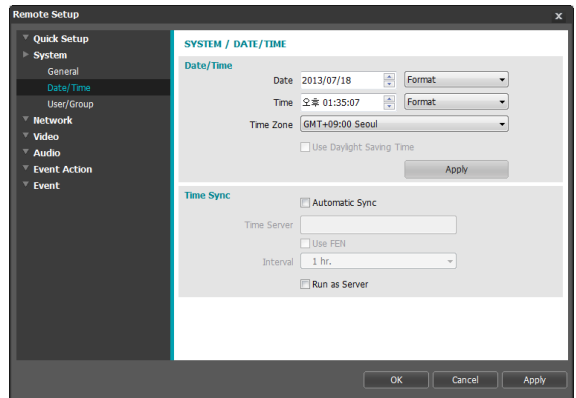
## • Setup

- **Load Default Setup:** Restores all settings other than Date/Time to their factory defaults. Select Include Network Setup to load default network settings as well. For more information on network setup, refer to the **Network on page 22**.
- **Import Setup:** Open a setup file and apply its settings to the camera. Click on the button and then select a setup file. Select Include Network Setup to apply the file's network setup settings (exc. FEN). For more information on network setup, refer to the **Network** on page 22.
- **Export Setup:** Export the current settings as a .dat file. Click on the button and then enter a file name.



- **Load Default Setup** and **Import Setup** options are available only to users belonging to the **Administrator** group.
- When applying the settings of a setup file, do not select the **Include Network Setup** option if the network settings contained in the selected file is currently being used by a different camera. Doing so can interfere with establishing a connection with the other camera.
- If IP Address, Admin Port, and/or SSL settings have been changed, Remote Setup will terminate after applying the current settings.

## Date/Time

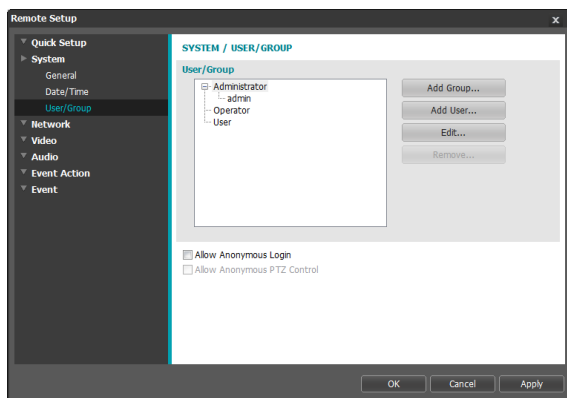


- **Date/Time:** Change the camera's date/time settings and display formats and configure the time zone and daylight saving time settings. Click **Apply** to apply the changes right away.
- **Time Sync**
  - **Automatic Sync:** Select to synchronize the system's time with the time server at a specified interval. Enter the time server's IP address or domain name and then specify the interval. If the time server is **FEN**-enabled, select the **Use FEN** option and then enter the time server's name instead of its IP address or domain name.
  - **Run as Server:** Select to run the camera as a time server. Other devices will then be able to synchronize its time setting with this camera's time setting.



- If you wish to enter a domain name instead of an IP address for the **Time Server** setting, DNS server must be configured during **Network** setup. If you wish to enter a server name instead of an IP address or a domain name, the **Use FEN** option must be enabled during **Network** setup.

## User/Group

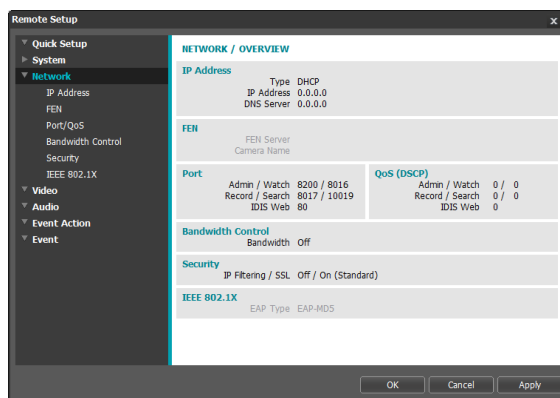


- **User/Group:** Change remote camera control permission settings for users and user groups.
  - **Add Group:** Add a new user group. Designate a name for the group and then specify control authorities.
  - **Add User:** Add a new user. Designate a name for the user, select which group to add the user to, and then enter a connection password.
  - **Edit:** Edit group authorities and/or user passwords. Select a group or user and then click on the button.
  - **Remove:** Delete groups or users. Select a group of user you wish to delete and then click on the button.
- **Allow Anonymous Login:** Select if you are using Webcasting. For more information on webcasting, refer to the **Webcasting** on page 31.
- **Allow Anonymous PTZ Control:** Select to control the PTZ remotely from a website using webcasting.



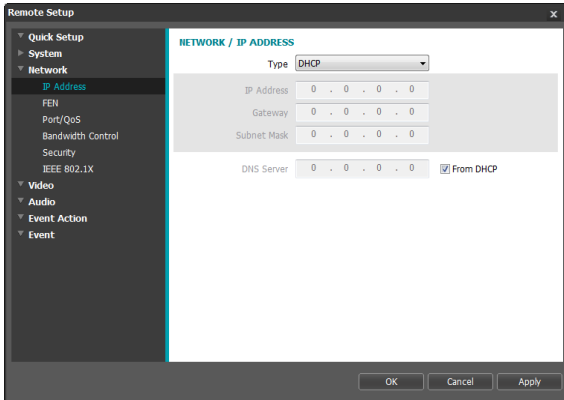
- **User/Group** settings can only be configured by users belonging to the **Administrator** group.
- There is no default password for the **Administrator** group's **admin** user.
- Standard groups (**Administrator**, **Operator**, and **User**) cannot be edited or deleted. Authorities assigned here apply identically to ONVIF protocol user groups.
- Group authorities that can be assigned are as follows:
  - **Upgrade:** Upgrade the system.
  - **Setup:** Configure the system's settings.
  - **Color Control:** Adjust the camera's brightness, contrast, saturation, and hue settings.
  - **PTZ Control:** Authority to control camera's pan, tilt and zoom functions.
  - **Alarm-Out Control:** Reset alarm outs.
  - **System Check:** View system event status.
  - **Search:** Search video recordings saved on the SD card from a remote program.
  - **Clip-Copy:** Search video recordings saved on the SD card and save them as video files from a remote program.

## Network



Change the network settings, enable FEN and security features, and control network bandwidth use.

## IP Address



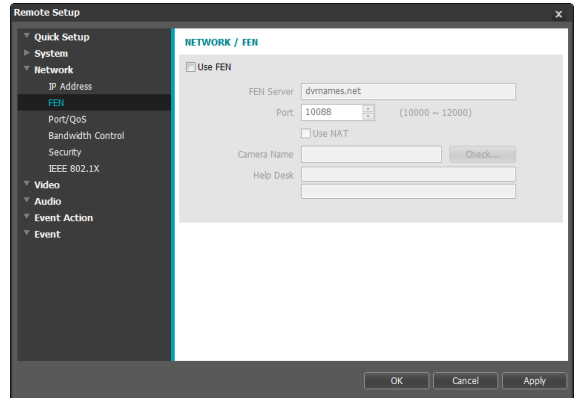
- **Type:** Select the type of network you are using. If this option has been changed, **Remote Setup** will terminate after applying the current settings.
  - **Manual:** Select if using a static IP. You will then be able to configure the related settings manually.
  - **DHCP:** Select if connected to the network using DHCP. Click **OK** to retrieve IP address and other network settings automatically from the DHCP server.
  - **ADSL (with PPPoE):** Select if connected to the network using ADSL. Enter the ID and password for ADSL connection and then click **OK** to log in and retrieve the IP address and other network settings automatically.
- **DNS Server:** Enter the DNS server's IP address. By using the DNS server, you will be able to use domain names instead of IP addresses when configuring the FEN, time, or SMTP server. If the camera is connected to the network via DHCP, select the **From DHCP** option to retrieve the DNS server's IP address from the DHCP server automatically. The updated address will be displayed upon the subsequent connection.



- Contact your network administrator for more information on the camera's network connection type, the DNS server's IP address, and other related information.
- If using DHCP or ADSL, the camera's IP address may change from time to time. We therefore recommend that you use the **FEN** feature.

## FEN

Select **Use FEN** to enable the **FEN** feature.



- **FEN Server:** Enter the FEN Server's IP address or domain name.
- **Port:** Enter the FEN Server's port number.
- **Use NAT:** Select if the camera is connected to the network via a router.
- **FEN Name:** Enter a camera name you wish to register to the FEN Server. Click **OK** to check the name's availability.
- **Help Desk:** Change the settings and then click **OK** to register the entered camera name to the FEN Server. If all the settings have been configured correctly, the FEN Server's help desk information will be shown in the **Help Desk** fields next time you enter the **FEN** setup screen.

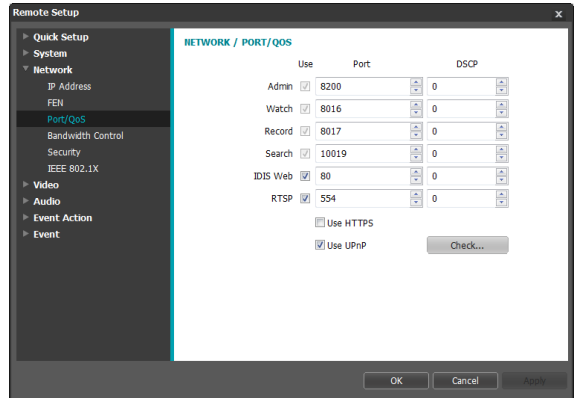


- The **FEN** (For Easy Network) is a feature that allows you to register a unique name for a camera that utilizes a dynamic IP address to the FEN Server and connect to the camera using the FEN name instead of an IP address, which can change from time to time. In order to use this feature, you must first register a FEN Name to the FEN Server.
- If network settings have been changed, click **OK** at the bottom of the setup window to save the changes and then setup the **FEN**.
- Inquire with your network administrator for the **FEN Server's** IP address or domain name. If a DNS server has been configured under **Network** setup, you can enter the FEN Server's domain name instead of its IP address for the FEN Server setting.
- If using an IP router (or NAT), port configuration and other network functions will depend on the usage method of the IP router (or NAT).
- You will not be able to save **FEN** settings unless you click on the **OK** button next to the **FEN Name** field and check the entered name's availability. In addition, you will be prompted with an error message if you do not enter a FEN name or enter a name already registered to the FEN Server. If a FEN name contains the #, \, and/or % symbol, it might not be able to connect to the camera from the IDIS Web program.



The FEN Server operated by IDIS is a service to its clients and may go offline without notice for server update purposes or due to an unexpected failure.

## Port/QoS

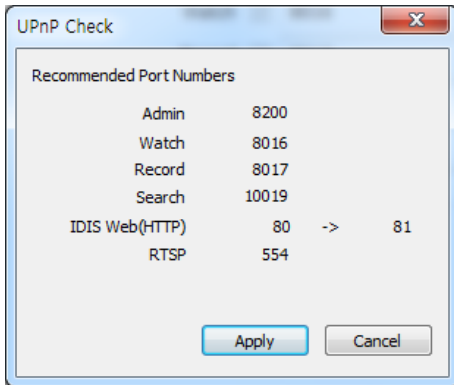


- **Use/Port:** Enable/disable ports and designate corresponding port numbers. **Admin, Watch, Record, and Search** ports are enabled by default and cannot be disabled. By enabling IDIS Web and RTSP ports, you will be able to use the IDIS Web program or a media player that supports RTSP (Real-Time Streaming Protocol) service to connect to the camera. If this option has been changed, **Remote Setup** will terminate after applying the current settings. (Applicable to **Admin** port number only.)
- **DSCP:** Designate each port's QoS (Quality of Service) level using DSCP values. Assigning QoS levels prioritizes the ports for network bandwidth use. Higher the DSCP value, higher the QoS level and thus higher on the network bandwidth allocation priority list. Use **0** if you do not want to assign a QoS level. The network environment must support DSCP in order for this feature to function properly. Contact your network administrator for more details.
- **Use HTTPS:** Select this option to apply https protocol-based security on IDIS Web.

- Use **UPnP**: If the camera is connected to the network via an IP router (or NAT), select this option to connect to the camera without setting up port forwarding. The IP router (or NAT) must be enabled with UPnP in order for this feature to function properly. For more information enabling UPnP on your IP router (or NAT), refer to the **IP router or NAT's operation manual**.

Click **Check** to test the current port settings.

A confirmation message will appear if all the selected ports are available for use. If not, a list of recommended port numbers will be shown.



Click **Apply** to use the recommended port numbers.



- It is not allowed to use the same port number for more than one function.
- You can connect to the camera using a media player that supports RTSP service and monitor its video feed. If the camera is connected to the network via an IP router (or NAT) or is behind a firewall, you must open the ports. (All ports if using UDP protocol and RTSP ports if using TCP protocol) This feature may not be supported by all media player. In addition, video display on certain media players may not be smooth depending on the network status, video streaming compression method used, and/or the resolution setting. Connection methods are as follows:

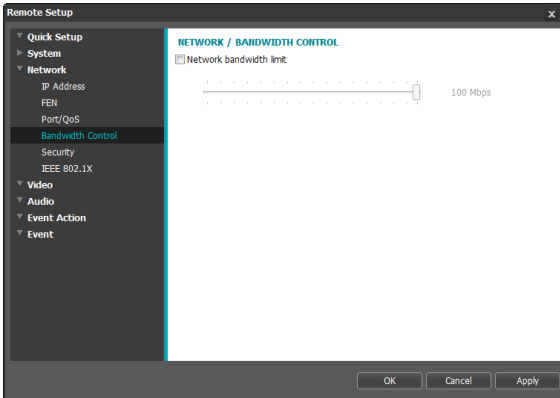
- **Via PC:** Launch the media player (such as VLC) and then enter **rtsp://ID:Password@IP Address:RTSP Port Number/trackID='Stream Number'** (Stream Number: 1 if Primary, 2 if Secondary, and 3 if Tertiary). (e.g.: rtsp://admin:@10.0.152.35:554/trackID=1 (User: admin, Password: None, Camera IP Address: 10.0.152.35, RTSP Port Number: 554, Stream: Primary))
- **Via Mobile Device:** Launch the web browser and then enter **http://IP Address:IDIS Web Port Number/** (If **Use HTTPS** has been enabled, enter **https** instead of **http**). Camera's IDIS Web port number and RTSP port number must be configured correctly in order to establish a connection this way.




- Port numbers of the remote program must be updated whenever the camera's port numbers are changed.
- ONVIF protocol may not function if using HTTPS.

## Bandwidth Control

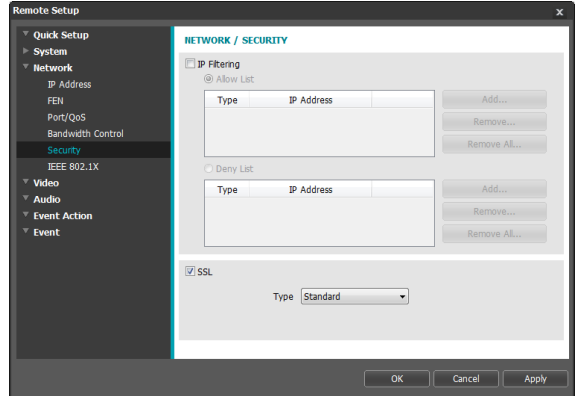
Regulates the camera's network bandwidth use based on network traffic fluctuations.




Select **Network Bandwidth limit** and then specify the maximum bandwidth. The camera will not be able to use more than the specified limit in the event of network traffic.

 It may not be possible to produce the frame rate specified under **Video > Streaming** if a network bandwidth limit has been set.

## Security

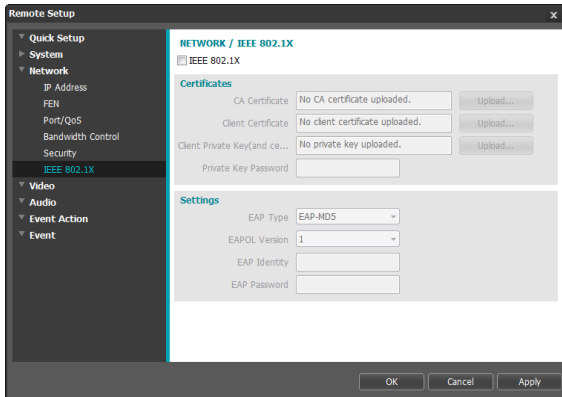


- **IP Filtering:** Select this option to enable IP Filtering. IP Filtering allows camera access from certain IP addresses and blocks access from others.
  - **Add:** Add new IP addresses to Allow List or Deny List. Select the **Host** option to add one IP address at a time. Select the **Group** option to define a range of IP addresses you wish to add.
  - **Remove/Remove All:** Remove individual or all IP addresses from Allow List or Deny List.
- **SSL:** Select this option to enable SSL (Secure Sockets Layer). Enabling this option applies SSL protocol protection on data transmitted out. However, programs and systems that do not support SSL will not be able to connect to the camera. If this option has been changed, Remote Setup will terminate after applying the current settings.

- 
- Time server, FEN Server, and SMTP server's IP addresses must be added to Allow List under **IP Filtering** in order to use Time Sync, FEN, and Send Email features. No connection to the camera will be permitted whatsoever from IP addresses added to **Deny List**.
  - Enabling the **SSL** option may place a greater load on the external system, depending on the level of security being used.
  - This product contains software developed by Open SSL Project for use in Open SSL Toolkit. (<http://www.openssl.org/>)

## IEEE 802.1X

Select the **IEEE 802.1X** option to enable IEEE 802.1X network connection authentication.

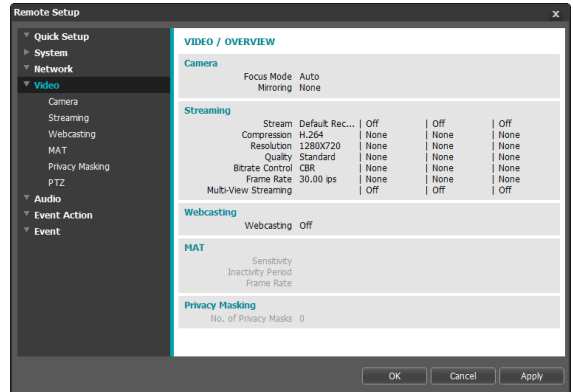


- **Certificates:** Upload a certificate or a private key. You may be prompted to enter a password for the private key.
- **Settings:** Configure EAP (Extensible Authentication Protocol) settings.
  - **EAP Type:** Choose a network connection authentication method. Selected method must be identical to the authentication method used on the authentication server.
  - **EAPOL Version:** Choose EAP authentication's version.
  - **EAP Identity/EAP Password:** Enter authentication ID and password.



The authentication server and AP must support IEEE 802.1X authentication in order for the IEEE 802.1X network connection authentication feature to function properly.

## Video

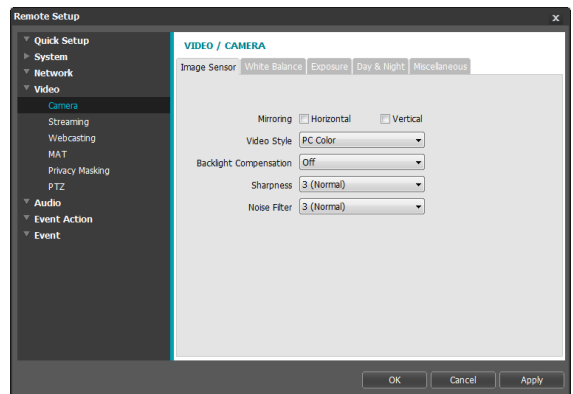


Configure **Camera**, **Streaming**, **Webcasting**, **MAT**, **Privacy Masking**, and **PTZ** options.

## Camera

### Image Sensor

Configure **Image Sensor** settings.

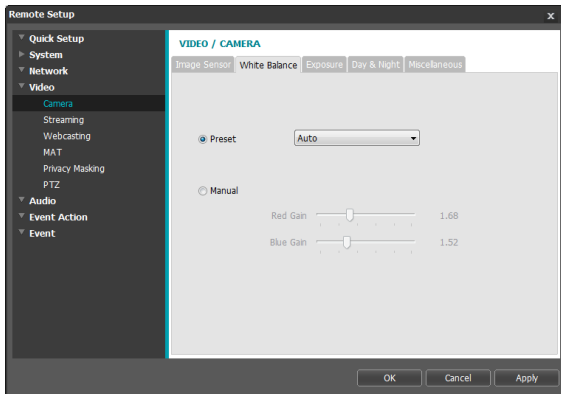


- **Mirroring:** Select Horizontal Reverse or Vertical Reverse to flip the image horizontally or vertically.
- **Video Style:** Select **TV Color** or **PC Color**.

- **Backlight Compensation:** Enable/disable the Backlight Compensation feature. If enabled, objects are exposed brighter in backlit situations.
  - **OFF:** Disables the BLC function.
  - **ON:** Enables the BLC function.
- **Sharpness:** Adjust the sharpness level. Adjust the contours to make the images look sharper. Increasing the value raises the sharpness level, but using too high a value can result in unwanted noise.
- **Noise Filter:** Select the noise filter level. Noise filter can reduce the noise in images taken under low-lighting conditions. Increasing the value reduces the noise, but using too high a value can result in blurry images.

## White Balance

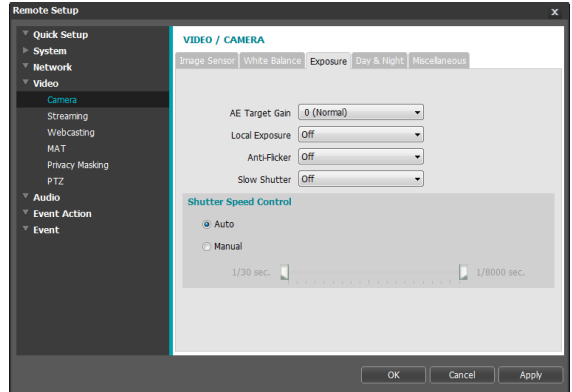
Configure **White Balance** settings.



- **Preset:** Use preconfigured white balance settings.
  - **Auto:** Allow the system to adjust the white balance automatically. The system will assess the lighting conditions and adjust the white balance automatically.
  - **INCANDESCENT - FLUORESCENT COLD:** Select a lighting type to apply the appropriate white balance.
- **Manual:** Adjust the white balance manually. Adjust Red and Blue gain values. Greater the value, greater the intensity of the corresponding color.

## Exposure

Configure **Exposure** settings.



- **AE Target Gain:** Specify exposure compensation's target gain. Exposure is compensated automatically based on the specified target gain. Higher the gain, brighter the images.
- **Local Exposure:** Activate **Local Exposure**. Use Local Exposure on images that appear too dark due to backlighting conditions and on images containing over-exposed sections. Dark parking lot entrances and gas station entrances at night, for example (Local Exposure compensates for the bright light coming from incoming vehicle headlights and makes it possible to see the license plates). Greater the value, clearer the image.
- **Anti-Flicker:** If the lights in the area where the camera is located use alternating current, specify the frequency of the lights to minimize flickering. Matching the frequencies can reduce flickering. (NTSC: 60Hz, PAL: 50Hz)
- **Slow Shutter:** Activate **Slow Shutter**. The electronic shutter's speed will decrease to the specified level under low-lighting conditions to allow more light in and therefore produce brighter images.



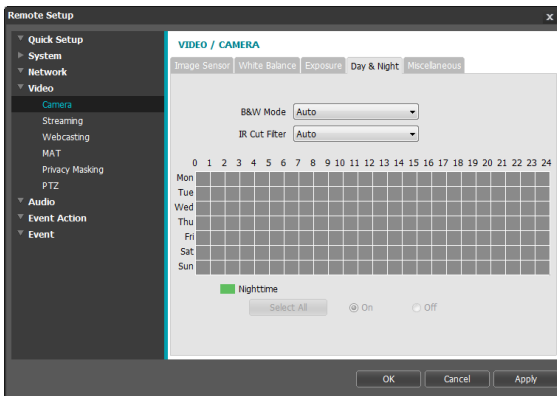
- **Shutter Speed Control:** Adjust Shutter Speed. This option is available only when **Anti-Flicker** and **Slow Shutter** are both set to **Off**.
  - **Auto:** The system will assess the lighting conditions and adjust the shutter speed automatically.
  - **Manual:** Use the slider to select the desired shutter speed. Select the most suitable minimum and maximum shutter speeds for the lighting conditions in the area where the camera is located.



With certain features, selecting **Auto** automatically loads settings suitable for the camera's installation environment.

## Day & Night

Configure **Day & Night** settings.

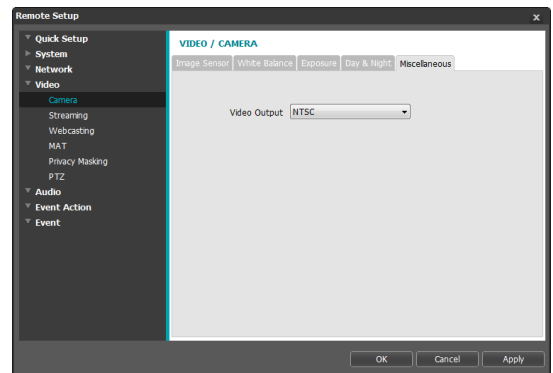


- **B&W Mode:** Display the images in greyscale for greater clarity in low-lighting conditions. When configuring **Event > Alarm In**, this feature will not function if **Day & Night Mode** event action has been configured.
  - **On/Off:** Enable/disable B&W Mode.
  - **Auto:** Allow the system to enable/disable B&W Mode automatically.
  - **Schedule:** Set up a B&W Mode schedule. B&W Mode is enabled on days and times designated as **Nighttime** and disabled at all other times. Select **On** or **Off** at the bottom of the schedule table and then click or drag on the dates and times to select/unselect as **Nighttime**. Select **On** or **Off** and then click **Select All/Clear All** to select/unselect all dates and times as **Nighttime**.

- **IR Cut Filter:** IR Cut Filter blocks out the infrared spectrum. You can ensure clear images at all times by blocking out the infrared spectrum in high-lighting conditions and allowing the infrared spectrum to pass through in low-lighting conditions. When configuring **Event > Alarm In**, this feature will not function if **Day & Night Mode** event action has been configured.
  - **Nighttime Mode, Daytime Mode:** Enable/disable IR Cut Filter.
  - **Auto:** Allow the system to enable/disable IR Cut Filter automatically.
  - **Schedule:** Set up an IR Cut Filter schedule. IR Cut Filter use is disabled during dates and times designated as **Nighttime** and enabled at all other times. Select **On** or **Off** at the bottom of the schedule table and then click or drag on the dates and times to select/unselect as **Nighttime**. Select **On** or **Off** and then click **Select All/Clear All** to select/unselect all dates and times as **Nighttime**.

## Miscellaneous

Configure **Miscellaneous** settings.

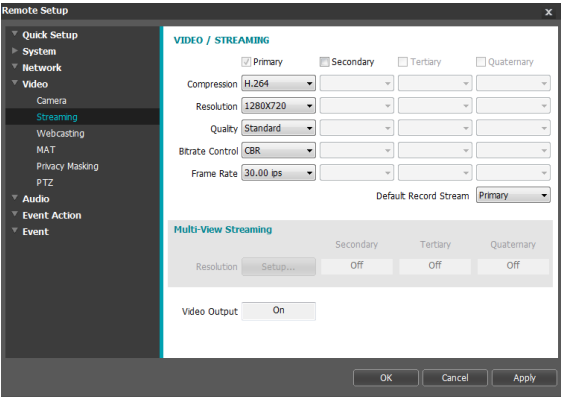


- **Video Output:** Select a video output signal format.



The BNC video out may not work depending on the settings in the **Video > Streaming** menu.

# Streaming



- **Primary, Secondary, Tertiary, Quaternary:** Multistreaming is supported. (priority: Primary > Secondary > Tertiary > Quaternary). Enable/disable streaming use. The lower stream settings may change depending on higher stream settings. The tertiary and quaternary streams may not be available depending on higher stream settings (refer to the table below).
  - DC-S1163F / DC-S1163W / DC-S1163WH models

Primary		Secondary		Tertiary		Quaternary	
Resolution	ips	Resolution	ips	Resolution	ips	Resolution	ips
1280x720	30	1280x720	15	-	-	-	-

– DC-S1263F / DC-S1263W / DC-S1263WH models

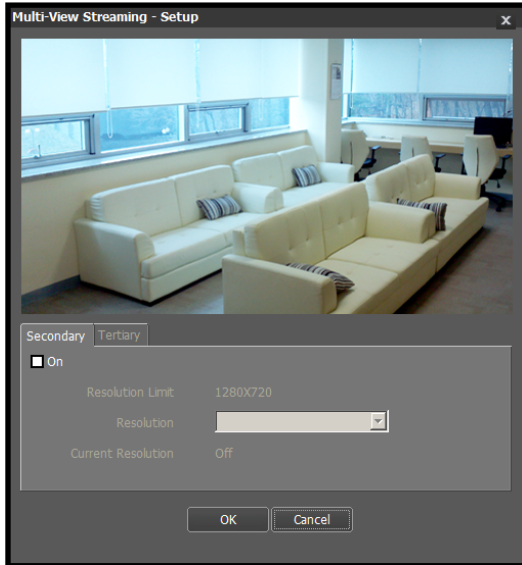
Primary		Secondary		Tertiary		Quaternary	
Resolution	ips	Resolution	ips	Resolution	ips	Resolution	ips
1920x1080	30	1280x720	10	1280x720	1	-	-
1920x1080	30	1280x720	10	352x240	10	-	-
1920x1080	30	704x480	30	-	-	-	-
1920x1080	30	704x480	15	704x480	15	-	-
1920x1080	15	1920x1080	15	704x480	30	-	-
1920x1080	15	1280x720	30	1280x720	15	-	-

- **Compression:** Choose the streaming compression method.

- **Resolution:** Choose a resolution setting for video streaming. The current stream resolution cannot be higher than the higher stream resolution.
- **Quality:** Choose a quality setting for video streaming.
- **Bitrate Control:** Choose a bitrate control mode for H.264 compression.
  - **CBR (Fixed Bitrate):** Maintains the current bitrate regardless of motion change in the video.
  - **VBR (Variable Bitrate):** Bitrate varies depending on motion changes in the video. Less movement places less load on the network and takes up less storage space.
- **Frame Rate:** Choose a frame rate setting for video streaming. The fame rate of the current stream cannot be higher than the fame rate of the higher stream if those stream resolutions are same.
- **Default Record Stream:** Choose a stream to use for recording. This setting, however, may not apply if a recording stream has been designated from the remote program or the SD card recording feature has been enabled. For more information, refer to the **Settings** on page 41.

- **Multi-View Streaming:** Designate a specific area of the screen and stream images from that area only. (not supported for the primary stream) Click **Setup** to designate a streaming area.

Select **On** and then specify the streaming area's resolution.

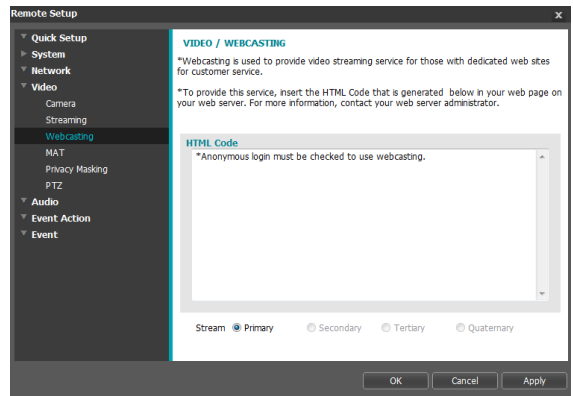


- **Resolution Limit:** Indicates the maximum resolution that can be set for the streaming area.
- **Resolution:** Designate a streaming area. Designated area is marked in red on the screen. You can adjust the resolution of the area or reposition the area by dragging and dropping using the mouse.
- **Current Resolution:** Displays the resolution of the designated streaming area.
- **Video Output:** Display whether the BNC video output works or not. The BNC video output may not work depending on the Streaming settings.

- ✓ If multiple users are connected to the camera, the increase in bandwidth use can lower the frame rate.

## Webcasting

Use the webcasting service to view live images from the camera on a web site.



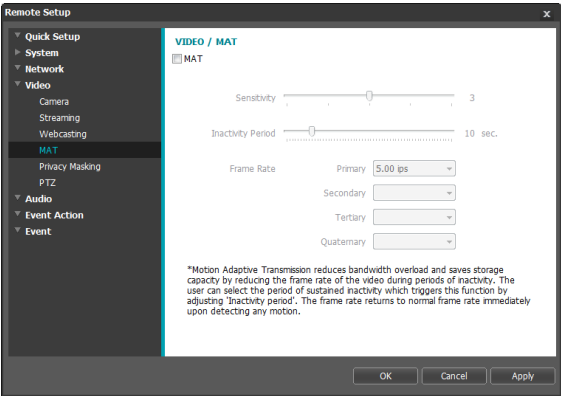
- **HTML Code:** Copy and paste the html code shown on the screen within the code of the web page you want the video to be displayed.
- **Stream:** Choose a stream to use for webcasting. Only a stream currently in use can be selected.



In order to use the webcasting service, the **Allow Anonymous Login** option under **System > User/Group** must be selected.

## MAT

Select the **MAT** option to use the MAT (Motion Adaptive Transmission) feature during video transmission and recording.

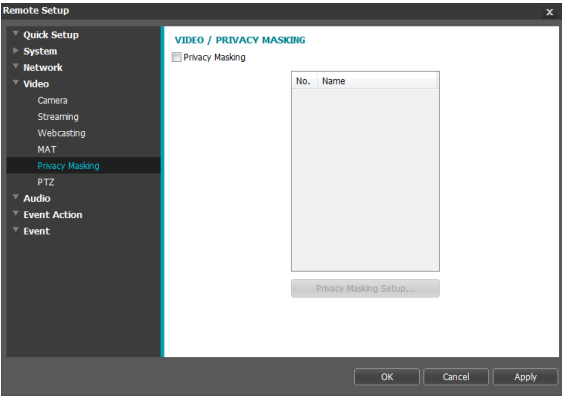


- **Sensitivity:** Set the motion detection sensitivity. Higher values will result in more sensitive motion detection.
- **Inactivity Period:** Set the Inactivity Period. If motion is not detected for the duration of time specified, video is transmitted and recorded using the frame rate designated below until movement is detected again.
- **Frame Rate:** Designate the frame rate to be used between the end of the Inactivity Period and the next motion detection. When the slow shutter mode is enabled under **Video > Camera** menu, the frame rate may change. Video is transmitted and recorded at the designated frame rate between the end of the Inactivity Period and the next motion detection. Once motion is detected again, the frame rate designated under **Streaming** is restored immediately.

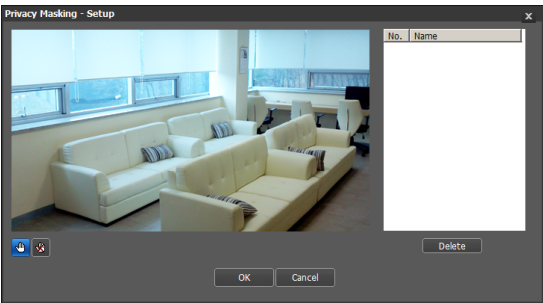
☒ **MAT (Motion Adaptive Transmission)** is a feature that lowers the frame rate when motion is not detected to reduce the load on the network and save on storage space. Based on the specified sensitivity setting, no movement will be assumed if there is no change between two consecutive images.

## Privacy Masking

Select **Privacy Masking** to set up a privacy mask over a specific area. The section on which a privacy mask is applied will appear as black when monitoring video.



- **Privacy Masking Setup:** Set up privacy masks. (Up to 16)

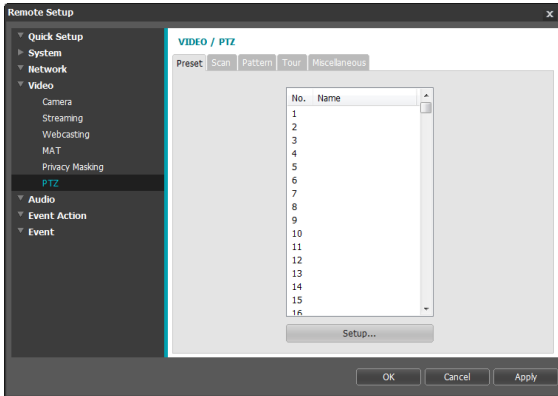


- **(Select)/(Unselect):** Set or remove a privacy mask. Click on the button and drag & drop using the mouse to set up a privacy mask.
- **(Direction):** Used to tilt and pan the camera.
- **Zoom (In/Out):** Zoom in and out.
- **Focus (Near/Far):** Adjust camera focus to far or near.
- **Speed:** Specify the camera's panning and tilting speed.
- **No./Name:** Displays a list of active privacy masks. The numbers indicate privacy mask numbers. Select the empty space next to a number to assign a name to the corresponding privacy mask. Click **Delete** to remove the selected privacy mask.

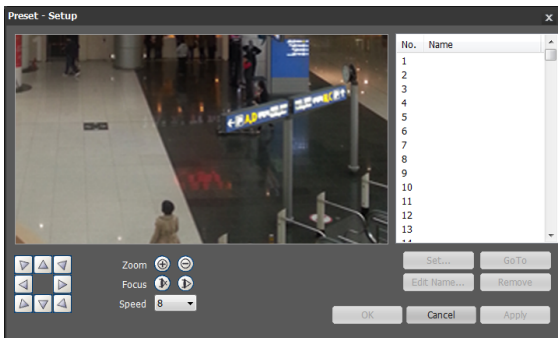
## PTZ

### Preset

Select the Preset tab and configure preset settings.



Displays a list of preset. The number indicates the preset number. Click **Setup** button to configure the preset.



Use the buttons below to choose a preset position.

- **Direction** (8 arrows): Used to tilt and pan the camera.
- **Zoom** (In/Out): Zoom in and out.
- **Focus** (Near/Far): Adjust camera focus to far or near.
- **Speed**: Specify the camera's panning and tilting speed.
- **Set**: Choose a preset number and then enter a name. This saves the current preset under the specified preset number and name.

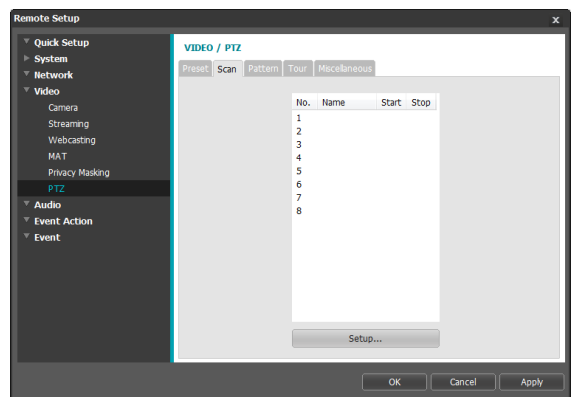
- **Go To**: Select a preset from the list and then click Go to move the camera to the selected preset position.
- **Edit Name**: Used to change the selected preset's name.
- **Remove**: Used to remove the selected preset.

### Scan

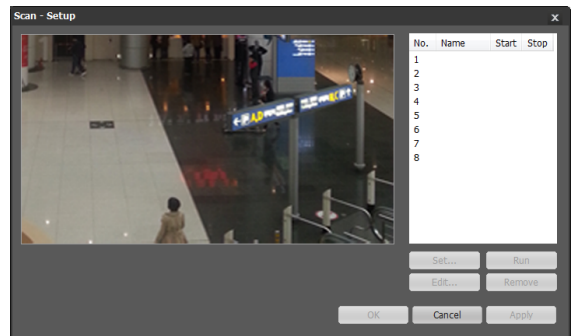
Select the Scan tab and configure scan settings.



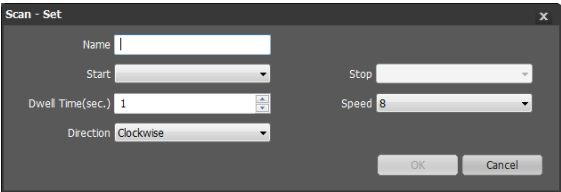
Used to set up a profile for moving the camera between two points. At least two presets must be available in order to use the scan feature.



Displays a list of scan. The number indicates the scan number. Click **Setup** button to configure the scan settings.



- **Set:** Displays a setup window.

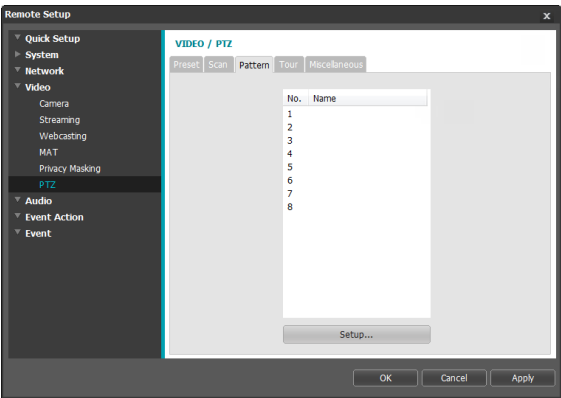


- **Name:** Enter a name for the scan profile.
- **Start, Stop:** Specify which presets to use as start and stop points.
- **Dwell Time (sec.):** Specify how long the camera will dwell at start and stop positions.
- **Speed, Direction:** Specify scanning speed and direction.
- **Run:** Select a scan profile and then click the Run button to perform the scan function.
- **Edit:** Used to edit the selected scan profile.
- **Remove:** Used to remove the selected scan profile.

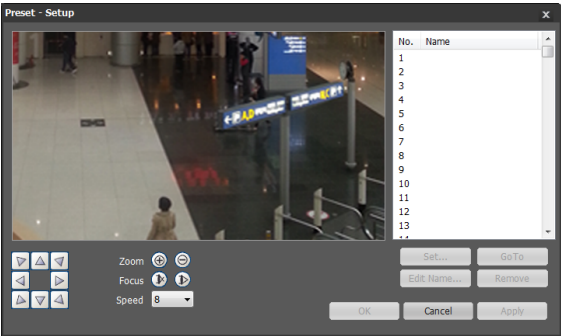
Pattern

Select the Pattern tab and configure pattern settings.

- ☒ Used to set up a pattern profile for the camera to follow along.




Displays a list of pattern. The number indicates the pattern number. Click **Setup** button to configure the pattern settings.

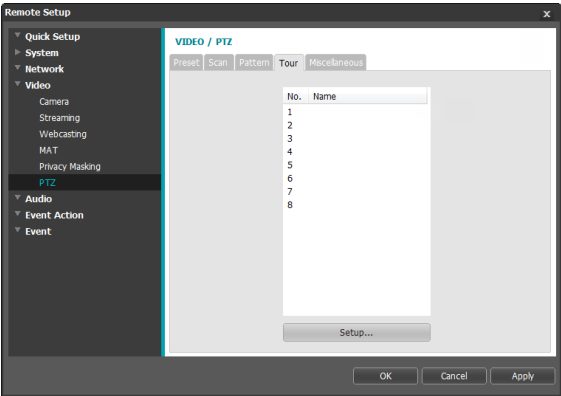


- **Record:** Select a pattern number, enter a name for the pattern, and then click OK to save the pattern. Move the camera using directional, zoom, and focus buttons and then click Stop to save the pattern profile. You can record up to two minutes of movement.
- **(Direction):** Used to tilt and pan the camera.
- **Zoom** **(In/Out):** Zoom in and out.
- **Focus** **(Near/Far):** Adjust camera focus to far or near.
- **Speed:** Specify the camera's panning and tilting speed.
- **Set:** Select a pattern profile and then click the Run button to perform the pattern function.
- **Go To:** Used to edit the selected pattern profile.
- **Remove:** Used to remove the selected pattern profile.

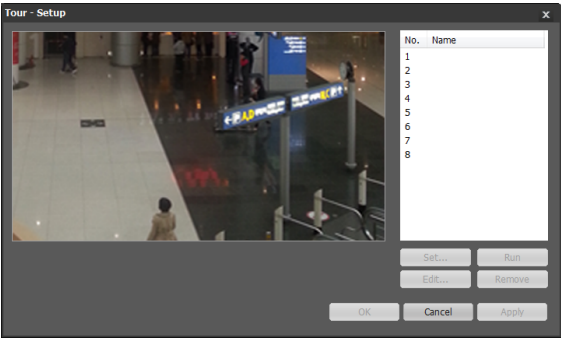
Tour

Select the Tour tab and configure tour settings.

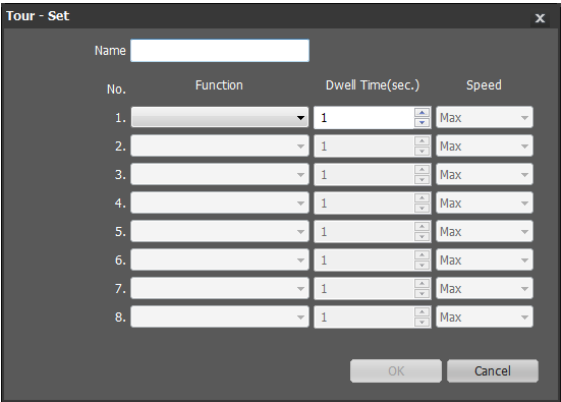
 Used to set up a tour profile of multiple functions in a designated sequence.



Displays a list of tour. The number indicates the tour number. Click **Setup** button to configure the tour settings.



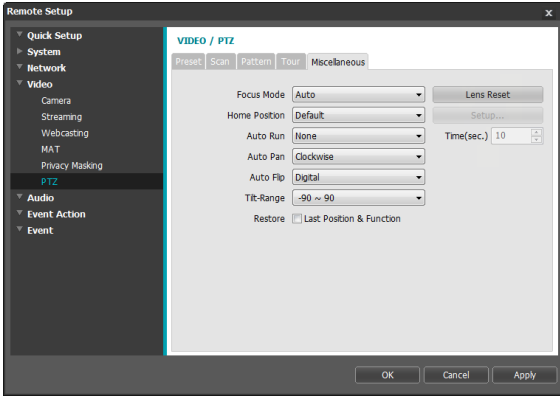
- **Set:** Displays a setup window.



- **Name:** Enter a name for the tour profile.
- **No.:** Indicates the order of the function in the tour sequence.
- **Function:** Select a function to be performed.
- **Dwell Time (sec.):** Specify how long to perform the selected function for.
- **Speed:** Specify the preset speed.
- **Run:** Select a tour profile and then click the Run button to perform the tour function.
- **Edit:** Used to edit the selected tour profile.
- **Remove:** Used to remove the selected tour profile.

## Miscellaneous

Select the Miscellaneous tab and configure miscellaneous settings.

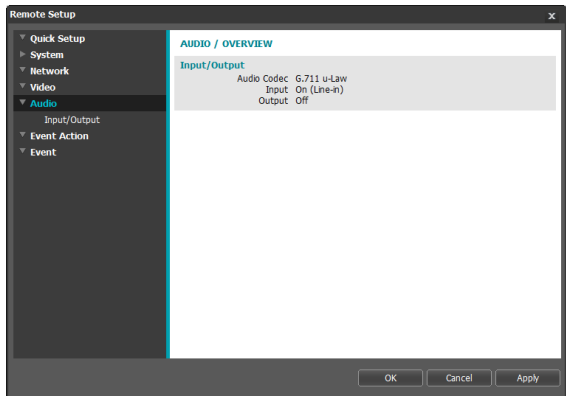


- **Focus Mode:** Choose a Focus Mode. If the camera image is changed by moving the object or changing the zoom magnification, it is required to adjust the focus.
  - **Manual:** Allows you to adjust the focus manually using remote programs.
  - **Auto:** The camera changes its focus automatically whenever a change occurs in the image.
  - **Auto – One Push:** The camera changes its focus automatically only for the first change in the image after PTZ movement changes. If another change occurs after that, this setting must be adjusted manually.
- **Lens Reset:** Adjust the focus by clicking the Lens Reset button to reset the lens setting when video is out of focus by external shocks.
- **Home Position:** Specify the camera's home position.
  - **Default:** Uses the factory-default position as the camera's home position.
  - **User Setting:** Uses the user-defined position as the home position. Select Setup to change the home position.
- **Auto Run:** Specify which action to take if the camera has not been controlled for the specified duration of time.
- **Auto Pan:** Specify the camera's panning direction. When Auto Pan is selected from a remote program, the camera pans in the direction selected here.

- **Auto Flip:** Automatically flips the image when the camera tilts past 90° to prevent the objects from appearing upside down.
  - **Digital:** Flips the image left to right or top to bottom.
  - **Mechanical:** Automatically pans or tilts the camera.
  - **Off:** Disables Auto Flip.
- **Tilt Range:** Specify the camera's tilting range.
- **Restore:** Specify whether to restore the camera to its last position or function. Enabling this option restores the camera to its last position or function after being restarted.

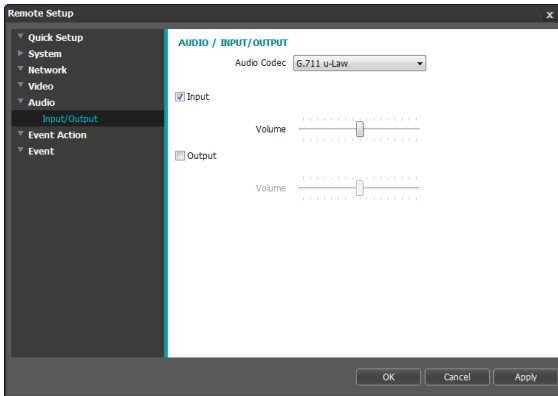
## Audio

Configure audio in/out settings.





## In/Out



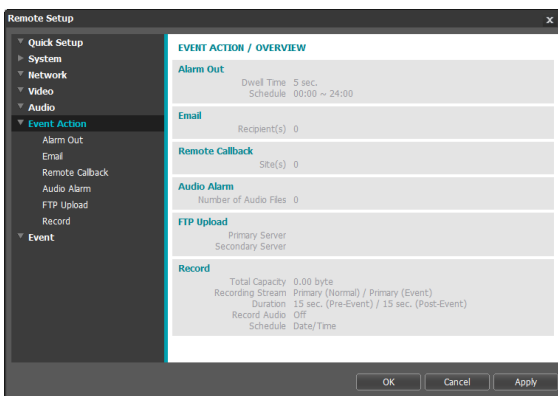
- **Audio Codec:** Select an audio codec.
- **Input:** Select an option and then an audio input source (microphone or line-in). Adjust the volume.
- **Output:** Select an option and then adjust the volume.



Cameras do not feature built-in audio amplifier units and therefore require the user to purchase a speaker system with a built-in amplifier separately.

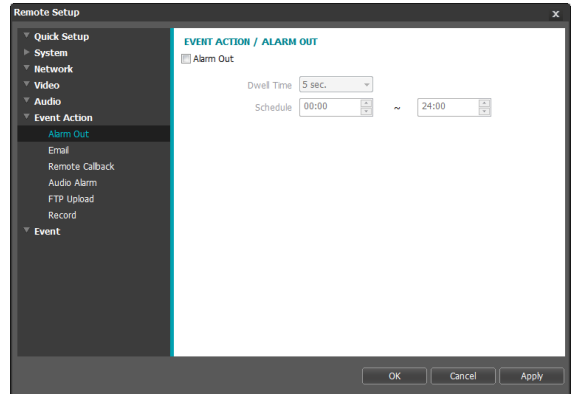
## Event Action

Designate event detection alert actions.



## Alarm-out

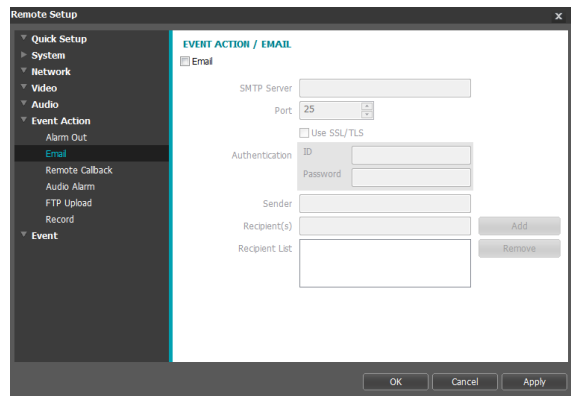
Select **Alarm Out** to enable alarm out.



- **Dwell Time:** Designate the alarm out duration. When an event occurs, alarm out will be generated for the specified duration.
- **Schedule:** Specify the alarm out schedule. Alarm out is generated during the specified period only.

## Email

Select **Email** to send out emails.



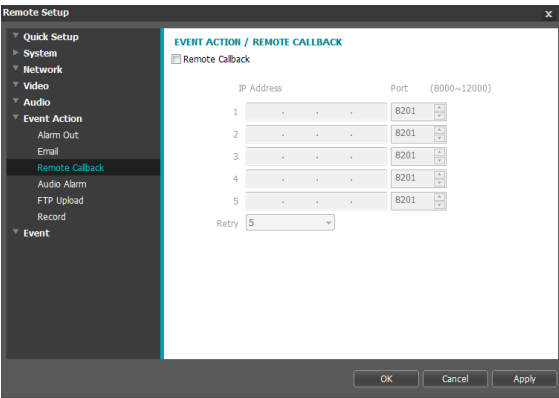
- **SMTP Server/Port:** Enter the SMTP server's IP address (or domain name) and port number you received from the network administrator. If a DNS server has been set up during network configuration, you can enter a domain name instead of an IP address. If using an SMTP server requiring an SSL connection, select the **Use SSL/TLS** option.

- **Authentication:** Enter a user ID and password if user authentication is required by the SMTP server.
- **Sender/Recipient(s):** Enter the sender and recipients' addresses. (Up to 10) The addresses must be properly formatted and include the @ symbol.

## Remote Callback

Select **Remote Callback** to send callback messages to a remote system.

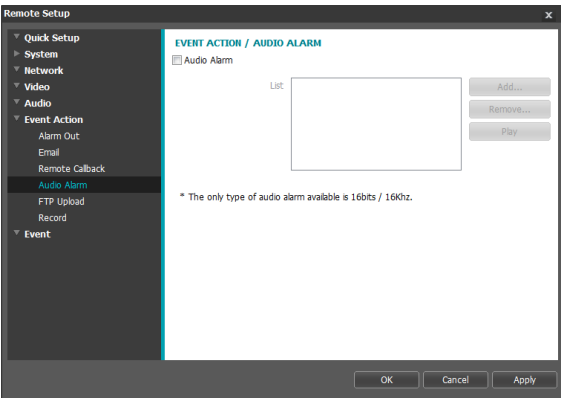
- ☒
- Not supported from the IDIS Web program.
  - The camera must be registered to the remote system in order to use the **Remote Callback** feature.



- **IP Address:** Enter the IP address and port number of the remote system that will receive the messages.
- **Retry:** Designate how many reattempts to make if message delivery fails.

## Audio Alarm

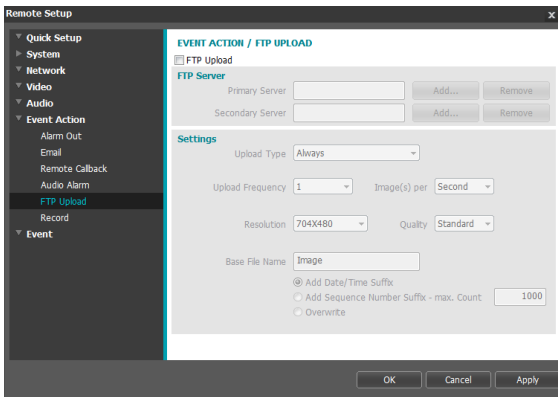
Select **Audio Alarm** to generate audio.



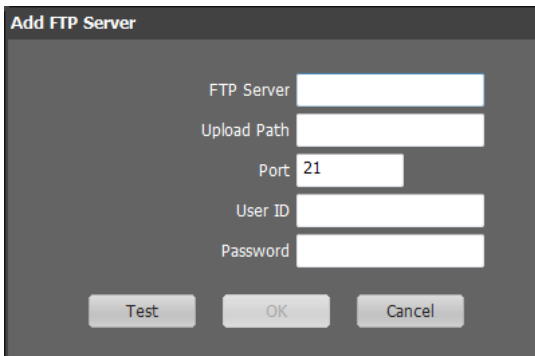
- **List:** Displays a list of audio files to playback. Click **Add** or **Remove** to add/remove audio (.wav) files. (supports 16-bit, 16KHz encoded files only) Select an audio file from the list and then click **Play** to listen to the file.

## FTP Upload

Select **FTP Upload** to upload .jpg image of the event detected to an FTP server.



- **FTP Server:** Click **Add** to register a new FTP server. Click **Remove** to remove a registered FTP server. When an event is detected, a .jpg image of the event detected image is uploaded to the Primary Server. If the upload to the Primary Server fails, the file will be uploaded to the Secondary Server. Upload to the Secondary Server will continue to be attempted until successful. Fill out the fields below and click **Test** to test the FTP server connection settings. Once the test is complete, click **OK**.



- **FTP Server:** Enter the FTP server's IP address (or domain name).
- **Upload Path:** Designate the file upload path.
- **Port:** Enter the FTP server's port number.
- **User ID, Password:** Enter the user ID and password needed for connecting to the FTP server.

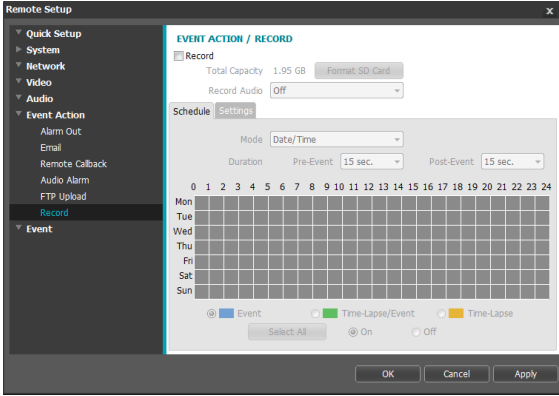
- **Settings:** Configure image and upload settings.
  - **Upload Type:** Choose an upload type. Select **Always** to upload images using the settings below, irrespective of event detection. Select **Event** to upload images using the settings below when an event is detected.
  - **Upload Frequency:** Activated only when Upload Type has been set to **Always**. Designate the upload speed. The specified number of images will be uploaded to the FTP server during the specified period of time.
  - **Upload 1 image per:** Activated only when Upload Type has been set to **Event**. Designate the upload speed. Select **Upload** for and specify a duration. Images will be uploaded for the specified duration at the specified upload speed. Select **Upload while event status is active** to upload images at the specified speed only while event status is active.
  - **Resolution/Quality:** Choose the resolution and quality of the images to upload to the FTP server. Range of resolution settings you can use here can vary depending on the resolution setting applied under **Video > Streaming**.
  - **Base File Name:** Enter a name for the files to be uploaded to the FTP server and then choose file identification options. Select **Add Date/Time Suffix** to add event detection date and time information to each image file. Select **Add Sequence Number Suffix - max. Count** to number the image files based on the order of event detection. Select **Overwrite** to overwrite the previous image with the new image. Event type is automatically added to the file names.



- When specifying the **Upload Path** or **Base File Name**, you cannot use special characters such as \, /, #, \*, |, :, ;, <, >, and ?.
- The resolution of FTP upload image can change depending on the resolution setting applied under **Video > Streaming**.
- Set speed settings for Upload Frequency and Upload 1 image per options in consideration of the FTP server's performance. FTP uploads can fail if the configured speed is higher than what the FTP server can handle.

## Record

Select **Record** to record video on the micro SD card. First, make sure that an SD card (Class 6 or higher) has been properly inserted.



- **Total Capacity:** Indicates the SD card's total capacity if it has been inserted properly.
- **Format SD Card:** Click on this button to format the inserted SD card. Formatting the SD card erases all data saved on the card.



This function is only supported for users in **Administrator** group.

- **Record Audio:** Enable/disable audio recording.

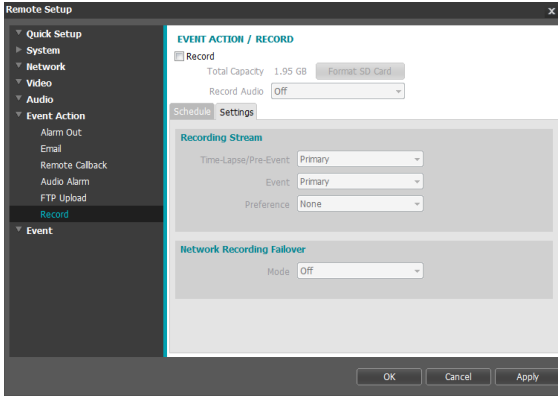
## Schedule

Select the **Schedule** tab and set up a recording schedule.

- **Mode:** Choose a recording mode.
  - **Always - Event:** Records video in event mode. In event recording mode, video is recorded when an event is detected.
  - **Always - Time-Lapse:** Records video in time lapse mode. In time lapse recording mode, video is recorded continuously, irrespective of event detection.
  - **Always - Time-Lapse/Event:** Records video in time lapse mode when event has not been detected and in event mode when one is detected.
  - **Date/Time:** Video is recorded in the specified mode according to the dates and times selected in the schedule. Select **On** or **Off** at the bottom of the schedule table and then choose a recording mode. Click on dates and times on the schedule table or drag to enable/disable recording mode. Select **On** or **Off** and then click **Select All/Clear All** to enable/disable recording mode on all dates and times.
- **Duration:** Specify the event recording duration.
  - **Pre-Event:** Select the pre-event recording duration. You can record up to 60MB of video. Using high resolution, quality, and frame rate settings can cause the recording to exceed the 60MB limit and stop before the end of the specified recording duration.
  - **Post-Event:** Select the post-event recording duration.

## Settings

Select the **Settings** tab and configure recording settings.



- **Recording Stream:** Choose a stream to use for recording. It's possible to designate different streams for different recording modes.
  - **Time-Lapse/Pre-Event:** Designate the stream to use for recording in time lapse mode or event mode (pre-event).
  - **Event:** Designate the stream to use for recording in event mode (post-event).
  - **Preference:** Designate recording stream priority.

<b>SD Recording</b>	Recording using the <b>Time-Lapse/Pre-Event and Event</b> streams designated above.
<b>Network Recording</b>	Record from the remote program using the designated recording streams. If the remote program does not support recording streams, however, <b>Default Recording Stream</b> specified under <b>Video &gt; Streaming</b> will be used.
<b>None</b>	Record using the <b>SD Recording</b> stream or the <b>Network Recording</b> stream, whichever has the higher resolution.

- **Network Recording Failover:** Select a network recording failover mode. You can recording video on the SD card when recording from the remote program fails. Video is recorded using the stream designated under **Recording Stream > Event**.



Not supported if the recording mode under the **Schedule** tab is set to **Always > Time-Lapse**.

- **Off:** Disables Network Recording Failover.
- **Always:** Records video continuously until recording from the remote program becomes functional again, regardless of the recording schedule.
- **On SD Schedule:** Records video based on the recording schedule set up under the **Schedule** tab until recording from the remote program becomes functional again.



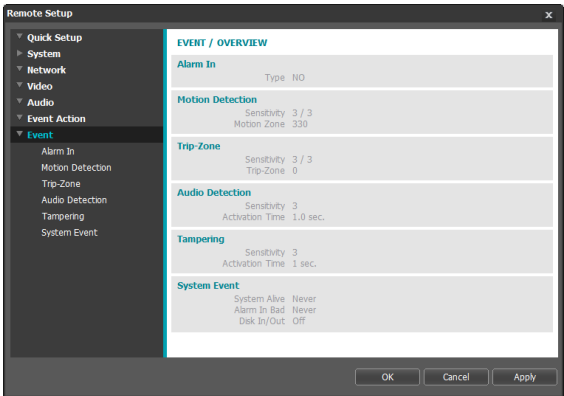
- Recordings saved on the SD card can be searched and played back from the IDIS Solution Suite Compact program or remotely from the remote program. For more information, refer to each program's **operation manual**.
- Video search and playback may not function properly on the remote program while video is being recorded on to the SD card.



To remove the SD card, unselect the **Record** option and wait 30 seconds before doing so. Removing the SD card while recording is in progress of without waiting 30 seconds can damage the system and/or the recording data.

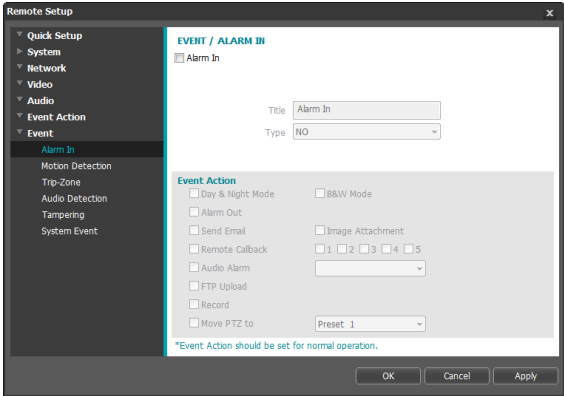
# Event

Configure event detection settings.



## Alarm In

Select **Alarm In** to enable alarm in event. With alarm in event enabled, alarm in detections by the alarm in connector will be assumed as events.



- **Title:** Enter a name for the alarm in device.
- **Type:** Select the alarm in type.

- **Event Action:** Select an alarm in event alert action.
  - **Day & Night Mode:** Select if you do not wish to use the IR cut filter when an event is detected. Select this option to override the **Day & Night Mode** settings under **Video > Camera**. Select **B&W Mode** to enable black and white mode when an event is detected. Expiration of the detected event will disable B&W Mode and restore IR Cut Filter.
  - **Alarm Out:** Select if you wish to generate an alarm out.
  - **Send Email:** Select if you wish to send an email. Select the **Image Attachment** option to attach a .jpg image of the event detected to the email.
  - **Remote Callback:** Select this option to send a message to a remote system and then select which system to send the message to.



- Not supported from the IDIS Web program.
- The camera must be registered to the remote system in order to use the **Remote Callback** feature.

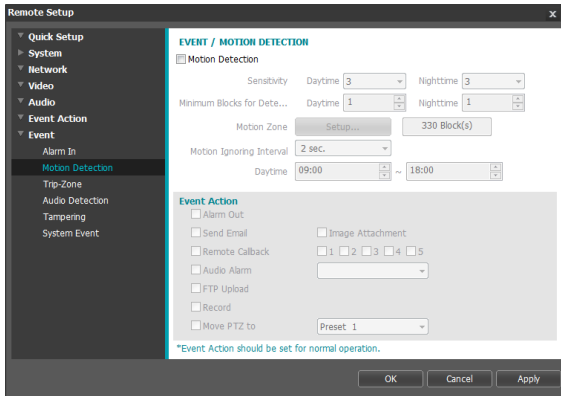
- **Audio Alarm:** Select this option to generate an audio alert and then choose an audio file (.wav).
- **FTP Upload:** Select this option if you wish to upload images to the FTP server.
- **Record:** Select this option to record video.
- **Move PTZ to:** Select a preset position to move the camera to that position. Preset positions can be set from the Remote Setup (**Video>PTZ>Preset**).



**Event Action** settings must be configured correctly in order to perform event actions.

## Motion Detection

Select **Motion Detection** to configure motion detection event settings. With motion detection event enabled, motion detections within the designated area will be assumed as events.



- **Sensitivity:** Select daytime and nighttime motion detection sensitivity levels. Higher values will result in more sensitive motion detection.
- **Minimum Blocks for Detection:** Select minimum blocks for daytime and nighttime motion detection. Motion must take place over the selected number of blocks in order for it to be considered as a motion detection event.
- **Motion Zone:** Click **Setup** and define the motion zone using blocks.
  - **(Select)**/ **(Unselect):** Enable/disable motion detection.
  - **(Single Block):** Select/unselect motion detection blocks individually.
  - **(Zone):** Select/unselect multiple motion detection blocks.
  - **(All):** Select/unselect all motion detection blocks.
- **Motion Ignoring Interval:** With Motion Ignoring Interval configured, no event log or notification is generated for motions detected during a period of time following a motion detection event.
- **Daytime:** Specify when daytime starts and ends. All other times will be assumed as nighttime.

- **Event Action:** Select a motion detection event alert action.
  - **Alarm Out:** Select if you wish to generate an alarm out.
  - **Send Email:** Select if you wish to send an email. Select the **Image Attachment** option to attach a .jpg image of the event detected to the email.
  - **Remote Callback:** Select this option to send a message to a remote system and then select which system to send the message to.



- Not supported from the IDIS Web program.
- The camera must be registered to the remote system in order to use the **Remote Callback** feature.

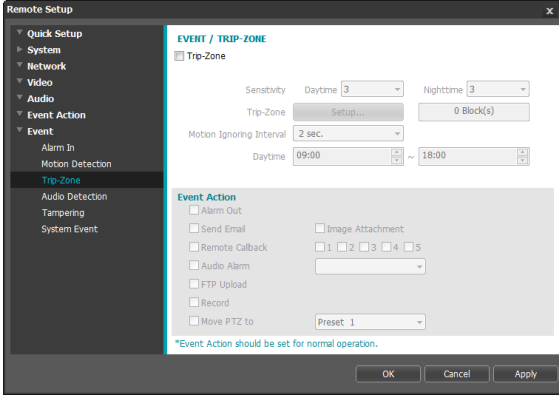
- **Audio Alarm:** Select this option to generate an audio alert and then choose an audio file (.wav).
- **FTP Upload:** Select this option if you wish to upload images to the FTP server.
- **Record:** Select this option to record video.
- **Move PTZ to:** Select a preset position to move the camera to that position. Preset positions can be set from the Remote Setup (**Video>PTZ>Preset**).



- **Event Action** settings must be configured correctly in order to perform event actions.

## Trip-Zone

Select **Trip-Zone** to configure trip zone event settings. With trip zone event enabled, motion detected inside/outside the selected area will be assumed as an event.



- **Sensitivity:** Select daytime and nighttime motion detection sensitivity levels. Higher values will result in more sensitive motion detection.
- **Trip-Zone:** Click **Setup** and define the trip zone using blocks.
  - **(Select)**/ **(Unselect):** Enable/disable trip zone.
  - **(Single Block):** Select/unselect trip zone blocks individually.
  - **(Zone):** Select/unselect multiple trip zone blocks.
  - **(All):** Select/unselect all trip zone blocks.
  - **Trip Direction:** Define in which direction the motion has to occur in order for it to be considered as an event. Select **In** for movement occurring from outside the trip zone in and **Out** for movement occurring from inside the trip zone out.
- **Motion Ignoring Interval:** With Motion Ignoring Interval configured, no event log or notification is generated for motions detected during a period of time following a motion detection event.
- **Daytime:** Specify when daytime starts and ends. All other times will be assumed as nighttime.

- **Event Action:** Select a trip zone event alert action.
  - **Alarm Out:** Select if you wish to generate an alarm out.
  - **Send Email:** Select if you wish to send an email. Select the **Image Attachment** option to attach a .jpg image of the event detected to the email.
  - **Remote Callback:** Select this option to send a message to a remote system and then select which system to send the message to.



- Not supported from the IDIS Web program.
- The camera must be registered to the remote system in order to use the **Remote Callback** feature.

- **Audio Alarm:** Select this option to generate an audio alert and then choose an audio file (.wav).
- **FTP Upload:** Select this option if you wish to upload images to the FTP server.
- **Record:** Select this option to record video.
- **Move PTZ to:** Select a preset position to move the camera to that position. Preset positions can be set from the Remote Setup (**Video>PTZ>Preset**).

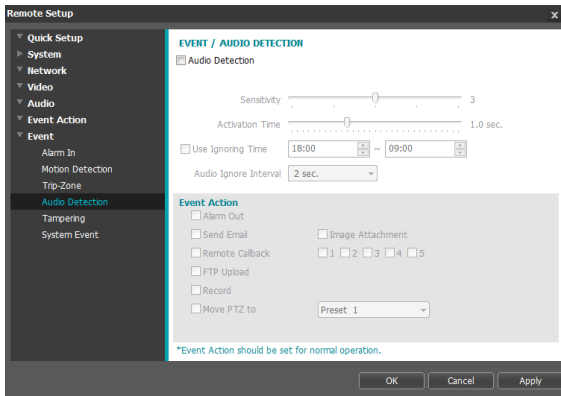


**Event Action** settings must be configured correctly in order to perform event actions.



## Audio Detection

Select **Audio Detection** to configure audio detection event settings. With audio detection enabled, an audio detection taking place during the specified activation period will be assumed as an event.



- **Sensitivity:** Define the audio detection sensitivity. Higher values will result in more sensitive detection.
- **Activation Time:** Specify how long audio has to be detected for it to be considered as an event. Audio detections that do not last for the specified duration of time will not be considered as events.
- **Use Ignoring Time:** Define the event ignoring time. Audio detections taking place during the defined time range will not be assumed as events.
- **Audio Ignore Interval:** With Audio Ignoring Time configured, no event log or notification is generated for audio detections taking place during a period of time following an audio detection event.

- **Event Action:** Select an audio detection event alert action.
  - **Alarm Out:** Select if you wish to generate an alarm out.
  - **Send Email:** Select if you wish to send an email. Select the **Image Attachment** option to attach a .jpg image of the event detected to the email.
  - **Remote Callback:** Select this option to send a message to a remote system and then select which system to send the message to.



- Not supported from the IDIS Web program.
- The camera must be registered to the remote system in order to use the **Remote Callback** feature.

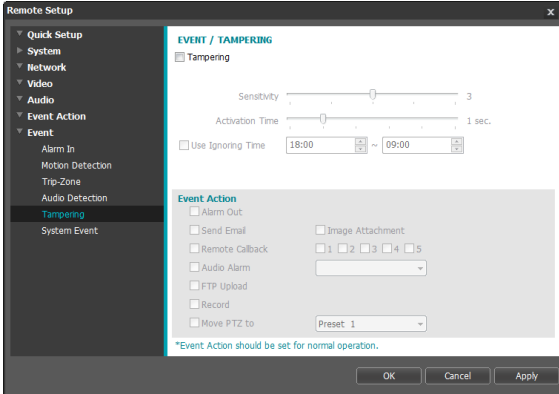
- **FTP Upload:** Select this option if you wish to upload images to the FTP server.
- **Record:** Select this option to record video.
- **Move PTZ to:** Select a preset position to move the camera to that position. Preset positions can be set from the Remote Setup (**Video>PTZ>Preset**).



- **Event Action** settings must be configured correctly in order to perform event actions.

## Tampering

Select **Tampering** to configure tampering detection event settings. With tampering detection event enabled, a sudden change in the video, such as due to movement of the camera or covering up of the lens, will be assumed as an event.



- **Sensitivity:** Define the tampering detection sensitivity. Higher values will result in more sensitive detection.
- **Activation time:** Specify how long tampering has to be detected for it to be considered as an event. Tampering detections that do not last for the specified duration of time will not be considered as events.
- **Use Ignoring Time:** Define the event ignoring time. Tampering detections taking place during the defined time range will not be assumed as events.

- **Event Action:** Select a tampering detection event alert action.
  - **Alarm Out:** Select if you wish to generate an alarm out.
  - **Send Email:** Select if you wish to send an email. Select the **Image Attachment** option to attach a .jpg image of the event detected to the email.
  - **Remote Callback:** Select this option to send a message to a remote system and then select which system to send the message to.



- Not supported from the IDIS Web program.
- The camera must be registered to the remote system in order to use the **Remote Callback** feature.

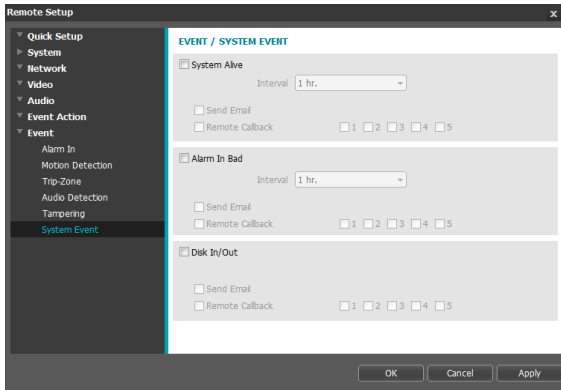
- **Audio Alarm:** Select this option to generate an audio alert and then choose an audio file (.wav).
- **FTP Upload:** Select this option if you wish to upload images to the FTP server.
- **Record:** Select this option to record video.
- **Move PTZ to:** Select a preset position to move the camera to that position. Preset positions can be set from the Remote Setup (**Video>PTZ>Preset**).



- **Event Action** settings must be configured correctly in order to perform event actions.

## System Event

Select **System Event** and configure system event settings. With system event enabled, system status, alarm in status, and disk status will be checked periodically and corresponding alerts will be generated.



- **System Alive:** Select to check the system status and then set up a schedule.
  - **Send Email:** Select to send out an email when the system comes on line.
  - **Remote Callback:** Select this option to send a message to a remote system when the system comes on line and then select which system to send the message to.
- **Alarm In Bad:** Select to check the alarm in status and then set up a schedule.
  - **Send Email:** Select to send out an email if no change is detected in the alarm in status.
  - **Remote Callback:** Select this option to send a message to a remote system if no change is detected in the alarm in status and then select which system to send the message to.

- **Disk In/Out:** Select to check if the SD card has been inserted/removed.
  - **Send Email:** Select to send out an email when the SD card is inserted/removed.
  - **Remote Callback:** Select this option to send a message to a remote system when the SD card is inserted/removed and then select which system to send the message to.



- **Email and Remote Callback settings under Event Action** must be configured correctly in order to send out emails and messages.
- **Remote Callback** is not supported on IDIS Web.
- The camera must be registered to the remote system in order to use the **Remote Callback** feature.

# Part 4 - IDIS Web

---

IDIS Web is a program that allows you to view and search video from remote locations over the Internet and can be accessed on a Microsoft Internet Explorer.

System requirements for running IDIS Web are as follows:

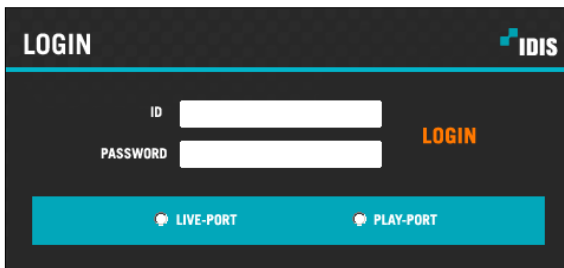
- OS: Microsoft® Windows® XP (Service Pack 3), Microsoft® Windows® Vista (Service Pack 1), Microsoft® Windows® 7 (Home Premium, Professional, Ultimate), Microsoft® Windows® 8 (Pro, Enterprise)
- CPU: Intel Pentium IV 2.4GHz or above (Core 2 Duo E4600 recommended)
- RAM: 1GB or more
- VGA: 128MB or more (1280x1024, 24bpp or above)
- Internet Explorer: Version 8.0 or later 32-bit

**1** Launch Internet Explorer and then enter the following information in the address bar.

- http://IP Address:Port Number (IDIS Web connection port number selected during camera IP address and port number setup)
- Or http://FEN Server Address/FEN Name (FEN Server address and FEN name registered to the FEN Server)
- Or http://web.idisglobal.com (it is required to enter the camera IP address when logging in. If the camera uses the FEN feature, you can enter the FEN name registered to the FEN server instead of the camera IP address after selecting the USE FEN option)

- ☒
- If the Use HTTPS option has been selected during IDIS Web port number setup, enter https instead of http. If prompted with a security certificate warning, select "Continue to this website (not recommended)." If the IDIS Web login page fails to load, configure Internet Explorer's settings as follows:
    - Tools → Internet Options → Security → Custom Level... → Medium-high (default) or Medium.
    - Tools → Internet Options → Advanced → Security → Use TLS 1.0 (select)
  - If connecting by entering an IP address and a port number, you can connect by entering just the IP address if IDIS Web connection port number has been set to 80 (443 when entering https).
  - If connecting by entering http://web.idisglobal.com, it is required to enter the Watch port number.
  - Contact your network administrator for the IP address of the camera you wish to connect to the the IDIS Web port number.

**2** When prompted with the IDIS Web login window, select **LIVE-PORT** or **PLAY-PORT** as the desired mode. Enter the ID and password and click **LOGIN** to sign in using the selected mode.



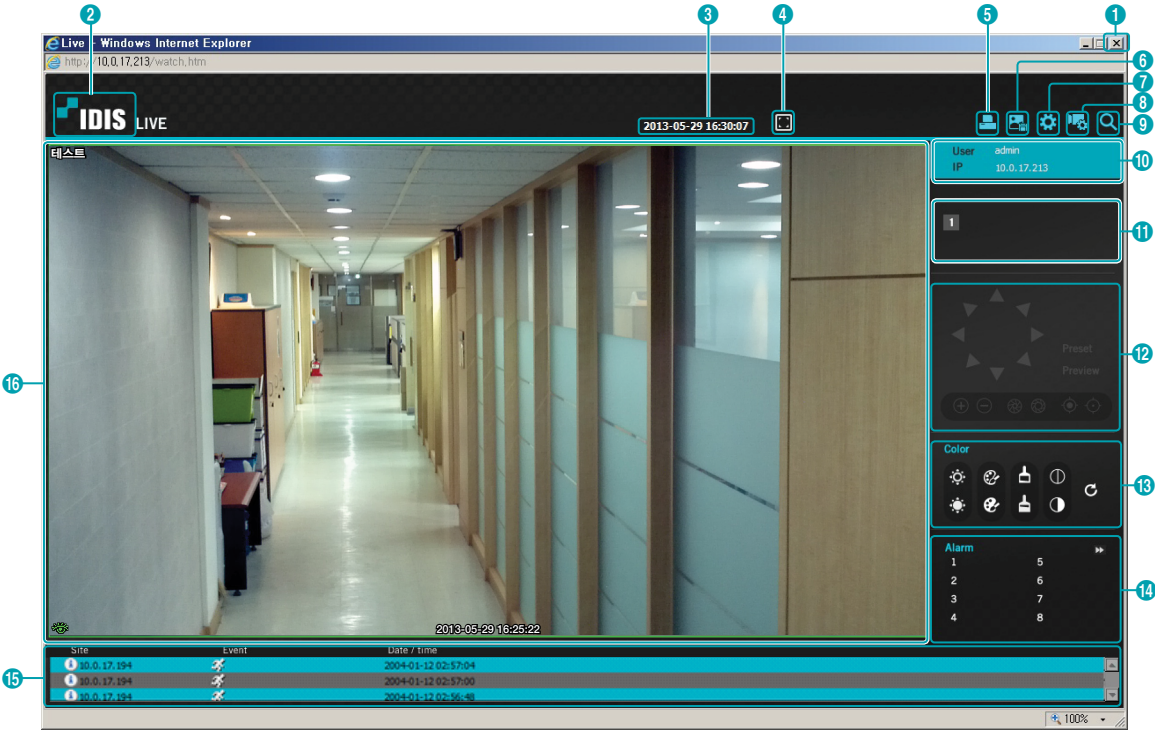
The screenshot shows the IDIS Web login interface. At the top left is the word "LOGIN" in white on a black background. At the top right is the IDIS logo. Below the title bar, there are two input fields: "ID" and "PASSWORD", both with white text on a black background. To the right of the "PASSWORD" field is an orange "LOGIN" button. At the bottom, there is a blue bar with two buttons: "LIVE-PORT" and "PLAY-PORT", both with white text and a small camera icon to the left of the text.



- IDIS Web supports Microsoft Internet Explorer only and no other type of web browser.
- IDIS Web does not work with Microsoft® Windows® 8 metro UI.
- Do not close the login window while IDIS Web is running. Switching over to Web Live or Web Search mode can cause a script error, requiring you to restart the IDIS Web program.
- When running IDIS Web, the bottom section of the screen may get cut off if the address bar or the status bar is shown. In this case, change Internet Options so that the address bar or the status bar is hidden. (**Tools → Internet Options → Security → Custom level... → Allow websites to open windows without address or status bars (Enable)**)
- To use IDIS Web on Microsoft Windows Vista or above, launch Internet Explorer by right-clicking on the icon and selecting the **Run as administrator** option. Otherwise, certain IDIS Web functions might not be available.
- Launching a new version of IDIS Web for the first time can cause Internet Explorer to load information from the previous version. In this case, navigate to **Tools → Internet Options → General**, delete temporary Internet files, and then restart IDIS Web.
- On Microsoft Windows Vista or above, lowered image transmission rate can prevent the screen from being displayed or updated. In this case, we recommend that you disable the computer's auto tuning function. Open the command prompt as an administrator. (**Start → Accessories → Command Prompt → Right-Click** and then select **Run as administrator**) Type in "**netsh int tcp set global autotuninglevel=disable**" and then press Enter. Restart the computer to apply the change. To enable auto tuning again, launch the command prompt as an administrator and then type in "**netsh int tcp set global autotuninglevel=normal**". Restart the computer to apply the change.

# Web Live Mode

A remote web monitoring program that allows you to monitor images from remote locales in real-time.



1	Press  to terminate IDIS Web.
2	Place the mouse pointer on the  to check IDIS Web's version.
3	Displays the current time.
4	Click  to view the video in full screen. Press the ESC key on the keyboard to return to the previous screen.
5	Click  to print the current video screen using a printer connected to the computer.
6	Click  to save the current video screen as an image file.
7	Click  to configure rendering mode and OSD settings. Select rendering mode to adjust the video output rate or select which OSD elements to display on the screen from the OSD list.
8	Click  to load the camera setup window.
9	Click  to switch over to Web Search mode.
10	Shows login information.
11	Indicates the camera's number.
12	Used to control a PTZ at a remote location.

13






Used to adjust live video quality.

14

Control the alarm out device connected to the camera.

15

Event status window at the bottom of the screen displays a list of events detected at remote locales.

	Enable/Disable Alarm In		Tampering
	Motion Detection		Audio Detection
	Trip zone		

16

Right-click on the screen to display the pop-up menu.

Change Camera Title


Enable Audio


Aspect Ratio ▶


MultiStream ▶


Anti-Aliasing Screen


☒ Renaming the camera in Web Live mode does not affect the camera's name on the remote system. If no name is entered for the camera, the name used at the remote locale is shown on the screen.

 Enables transmission of audio to the remote locale via microphone.

 Enables playback of audio from the remote locale on speakers.

 Enables two-way audio communication with the remote locale.

 Disables audio transmission.

☒ If the remote locale connected to supports audio transmission,  icon appears on the corresponding camera screen.

**Aspect Ratio:** Change the aspect ratio of the video displayed on the screen.

**Fit to Screen:** Fit the video to the size of the camera screen.

**Fit to Aspect Ratio:** Resizes camera screen to original aspect ratio of the video.

**Half Size (x0.5) - 4 Times Bigger (x4):** Displays the camera videos in the selected size based on the original size of the video. For example, original size (x1) displays the video in its original size. Half size (x0.5) through 4 times larger (x4) options are only available if there is enough space on the camera screen to accommodate the selected size.

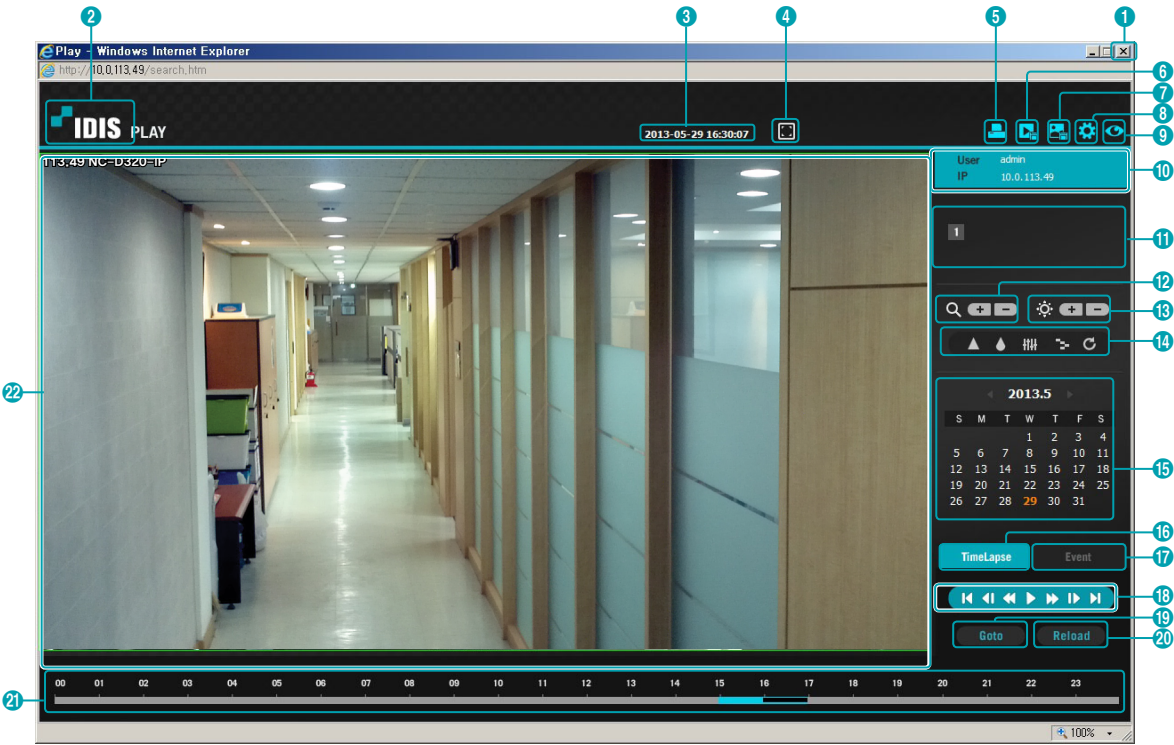
**MultiStream:** If the camera is running on multi-stream mode, you can choose between the streams.




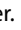


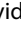

**Anti-Aliasing Screen:** Removes stair step effect (blocks) that are caused when zooming a video to improve overall quality of video output.

# Web Search Mode

A remote web search program that allows you to search for recordings from remote locales in real-time.

- ☒
- While in Web Search mode, connection to remote locales will terminate automatically after 30 minutes of inactivity.



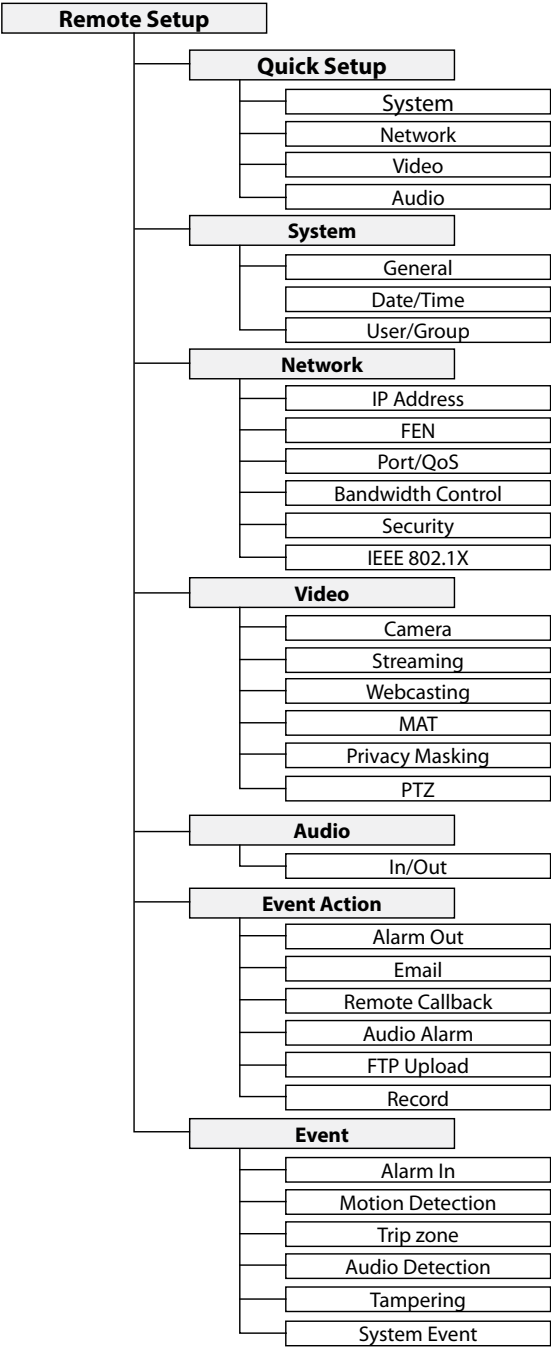
1	Press  to terminate IDIS Web.
2	Place the mouse pointer on the  IDIS logo to check IDIS Web's version.
3	Displays time information of the video recording from the remote locale.
4	Click  to view the video in full screen. Press the ESC key on the keyboard to return to the previous screen.
5	Click  to print the current video screen using a printer connected to the computer.
6	Click  to save the video recording as an executable file.
7	Click  to save the current video screen as an image file.
8	Click  to configure rendering mode and OSD settings. Select rendering mode to adjust the video output rate or select which OSD elements to display on the screen from the OSD list.
9	Click  to switch over to Web Live mode.
10	Shows login information.



11	Indicates the camera's number.	
12	Zoom in or out on the video.	
13	Adjust image brightness.	
14	Apply image filters (Sharpen, Blur, Equalizer, Interpolation, and Revert) to the images.	
14	<div><div><div></div></div></div>	Image calibration is applied only during the paused state.
15	Use the calendar to search for video recordings by specific dates.	
15	Dates containing video recordings are highlighted in light blue. Selecting a date containing video recording data loads the earliest recording from that date. Selected date is highlighted in orange.	
16	Select <div>TimeLapse</div> to enable time lapse search mode and search/playback video recordings in chronological order. In time lapse search mode, video recordings can be searched by selecting specific dates on the calendar. Time information of video recordings found on the selected dates is shown on the time table at the bottom of the screen. Select a point in time to display video from that moment. If multiple recordings are available for the selected point in time, you can select the desired segment.	
17	Select <div>Event</div> to enable event search mode and search for events matching user-designated parameters.	
18	Use the playback controls to play back video.	
18	<div><div><div></div></div></div>	<div><div><div></div></div></div>
18	<div><div><div></div></div></div>	<div><div><div></div></div></div>
18	<div><div><div></div></div></div>	<div><div><div></div></div></div>
18	<div><div><div></div></div></div>	<div><div><div></div></div></div>
19	Click <div>Goto</div> to designate recent recordings you wish to search and then jump to a specific point in the recording.	
20	Click <div>Reload</div> to reload recent video recordings from remote locales.	
21	Indicates the camera's recording data on a time bar. If the camera's system clock has been changed to a point in the past and more than one recording exists at the same point in time as a result, you will be able to choose which segment to search from the segment menu on the upper right portion of the time table.	
22	Right-click on the screen to display the pop-up menu.	
22	<div><div><div></div></div></div>	Renaming the camera in Web Search mode does not affect the camera's name on the remote system. If no name is entered for the camera, the name used at the remote locale is shown on the screen.
22	<div><div><div>Change Camera Title</div><div>Enable Audio</div><div>Aspect Ratio</div><div>Anti-Aliasing Screen</div></div></div>	
22	<div><div><div>• <b>Change Camera Title:</b> Used to change the camera's name.</div><div>• <b>Enable Audio:</b> If audio was recorded with the video, enabling this option plays audio upon playback.</div><div>• <b>Aspect Ratio:</b> Change the aspect ratio of the video displayed on the screen.</div><div>• <b>Anti-Aliasing Screen:</b> Removes stair step effect (blocks) that are caused when zooming a video to improve overall quality of video output.</div></div></div>	

# Part 5 - Appendix

## Setup Menu Tree (Remote Setup)



## Troubleshooting

Problem	Check
<b>The main unit won't turn on.</b>	<ul style="list-style-type: none"> <li>• Check the power cable connection.</li> <li>• Check the power outlet.</li> </ul>
<b>PoE switch isn't being recognized.</b>	Check the grounding status of the I/O device connected to the camera and the PoE switch. If they are not grounded, ground them and try again.
<b>I can't see Live videos.</b>	<ul style="list-style-type: none"> <li>• Check the camera's power status.</li> <li>• Check the network connection status of the computer and the network camera.</li> </ul>
<b>Images are blurry.</b>	<ul style="list-style-type: none"> <li>• Make sure the lens is clean. If not, clean it using a soft piece of cloth or a brush.</li> <li>• Make sure the lens is in focus. Adjust the focus during daytime.</li> <li>• If there is too much light coming into the camera or the camera is picking up an overly bright light source, adjust the camera's position/angle accordingly.</li> </ul>
<b>Video color appears incorrect.</b>	Check the white balance settings. If using the <b>Auto</b> option, it may take some time for the white balance to be adjusted.
<b>Images are blinking.</b>	If the camera is pointed at the sun or a fluorescent lamp, adjust the camera's angle away.
<b>Lost the admin ID and password and unable to connect to a network camera.</b>	You must perform a factory reset. A factory reset will revert all settings, including network settings, to their factory defaults. After performing a factory reset, make a memo of the admin ID and password as a safety precaution.
<b>Unable to launch IDIS Web.</b>	If the IDIS Web login screen is not loading, check which version of Microsoft Internet Explorer you are using. IDIS Web may not launch properly on versions 6.0 or below.

# Specifications



These product specifications may change without prior notice.

## Lens

<b>Lens Type</b>	Varifocal optical zoom
<b>Focal Length</b>	F1.6 to F2.8, f=4.7 mm to 84.6 mm
<b>Viewing Angle</b>	64.9° (Wide) to 4.7° (Tele) – Diagonal
<b>Lens Iris Control</b>	DC auto-iris
<b>Day &amp; Night Filter</b>	Supported

## Camera

<b>Image Sensor</b>	1/2.8" CMOS
<b>Minimum Subject Lux</b>	0.5 Lux @ F 1.6 (30 IRE)
<b>Scanning Method</b>	Progressive scan
<b>Signal-to-Noise Ratio</b>	> 45 dB
<b>Dynamic Range (Digital WDR)</b>	> 90 dB
<b>Electronic Shutter</b>	Auto
<b>Pan/Tilt/Zoom</b>	Number of Presets/Scans/Patterns/Tours: 256 / 8 / 8 / 8 Pan: 360° (endless), 0.02° to 180°/sec (Preset 420°/s) Tilt: -10° to 190°, 0.02° to 180°/s (Preset 420°/s) Zoom: 18x optical zoom
<b>External Storage* (Optional)</b>	Micro SD (SDHC) memory card (class 6 or higher, max. 32GB)

\* An SLC (Single Level Cell) or MLC (Multi Level Cell) card by SanDisk or Transcend is recommended to ensure stable recording performance.

\* An SD card is a consumable product with a finite service life. Prolonged use will damage the card's memory sectors and result in data loss or memory card failure. Test the SD card regularly and replace it whenever necessary.

## Video

<b>Signal Format</b>	NTSC or PAL (selectable)
<b>Compression Algorithm</b>	H.264, M-JPEG (supports 4-stage image compression rate)
<b>Compression Resolution</b>	<i>DC-S1163F / DC-S1163W / DC-S1163WH models:</i> CIF (352x240), 4CIF (704x480), 720p (1280x720)
	<i>DC-S1263F / DC-S1263W / DC-S1263WH models:</i> CIF (352x240), 4CIF (704x480), 720p (1280x720), 1080p (1920x1080)
<b>Bitrate Control</b>	<i>DC-S1163F / DC-S1163W / DC-S1163WH models:</i> H.264 –CBR / VBR (up to 8 Mbps)
	<i>DC-S1263F / DC-S1263W / DC-S1263WH models:</i> H.264 –CBR / VBR (up to 12 Mbps)
<b>Max. Transmission Rate (frames per second)</b>	<i>DC-S1163F / DC-S1163W / DC-S1163WH models:</i> 30 ips @ 720p + 30 ips @ 720p
	<i>DC-S1263F / DC-S1263W / DC-S1263WH models:</i> 30 ips @ 1080p + 4 ips @ 1080p
<b>Multi-Stream</b>	Primary, Secondary, Tertiary, Quaternary

## Audio

<b>Compression Algorithm</b>	G.726 (8KHz), G.711 $\mu$ – Law (8KHz), ADPCM (16KHz)
------------------------------	---

## I/O

<b>Video Out**</b>	1 Composite, 1 Vp-p
<b>Audio In</b>	1 line in
<b>Audio Out</b>	1 line out
<b>Alarm In</b>	1 TTL, NC/NO programmable, 4.3V (NC) or 0.3V (NO) threshold, 5 VDC
<b>Alarm Out</b>	1 relay out, NO only, 0.3A @ 125 VAC, 1A @ 30 VDC
<b>Network Connection</b>	10/100 Mbps Ethernet

\*\* Use these ports for previewing video and not monitoring video.

## Connectors

<b>Video Out***</b>	Terminal block
<b>Audio I/O</b>	Terminal block
<b>Alarm I/O</b>	Terminal block

<b>Ethernet Port</b>	RJ-45
<b>Power</b>	DC Jack (internal/external diameter: 0.098" (2.5mm) / 0.217" (5.5mm))

\*\*\* Use these ports for previewing video and not monitoring video.

General

<b>External Dimensions (Ø x H)</b>	7.87" x 7.87" (200mm x 200mm)
<b>Packaging Dimensions (W x H x D)</b>	10.83" x 12.6" x 10.83" (275mm x 320mm x 275mm)
<b>Weight (Main Unit)</b>	5.40 lbs. (2.45kg)
<b>Weight (Packaging)</b>	7.94 lbs. (3.6kg)
<b>Working Temperature</b>	<i>DC-S1163F / DC-S1263F / DC-S1163W / DC-S1263W models:</i> 14°F ~ 122°F (-10°C ~ 50°C) (Starting Temperature: 32°F ~ 122°F (0°C ~ 50°C)) <i>DC-S1163WH / DC-S1263WH models:</i> -22°F ~ 122°F (-30°C to 50°C) (Starting Temperature: 5°F ~ 122°F (-15°C ~ 50°C))
<b>Operating Humidity</b>	0% to 90%
<b>Power Input</b>	<i>DC-S1163F / DC-S1263F / DC-S1163W / DC-S1263W models:</i> 12 VDC, 24 VAC, PoE (Power over Ethernet) (IEEE 802.3af, Class 3) <i>DC-S1163WH / DC-S1263WH models:</i> 12 VDC, 24 VAC, PoE (Power over Ethernet) (IEEE 802.3at, Class 4)
<b>Power Consumption</b>	Max. 8.5W ( <i>DC-S1163WH / DC-S1263WH models</i> - With heater on: Max. 27.5W)
<b>Certifications</b>	FCC, CE, IP66****

\*\*\*\* Not applies to *DC-S1163F / DC-S1263F* models.

**Index**

**A**

Admin/Watch/Recording/Search Ports 24

**B**

Bitrate Control 30

**C**

Camera Name 20

Compression 30

**D**

Date/Time 21

DSCP 24

**F**

FEN Name 23

FEN Server 23

Frame Rate 30

**I**

IDIS Web Port 24

IP Filtering 26

**M**

MAT 32

**N**

Network Bandwidth Limit 26

**O**

ONVIF Protocol 21

**Q**

Quality 30

**R**

Resolution 30

RTSP Port 24

**S**

SSL 26

**T**

Time Sync 21

**U**

Use FEN 23

Use HTTPS 24

User/Group 22

Use UPnP 25



**IDIS Co., Ltd.**

For more information, please visit at  
[www.idisglobal.com](http://www.idisglobal.com)