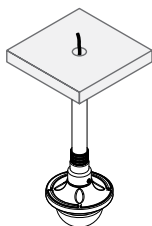


# DA-CM2000 INSTALLATION MANUAL



This manual is intended for users of the DA-CM2000 ceiling mounting bracket. It includes instructions for mounting the DA-CM2000 ceiling mounting bracket to a ceiling.

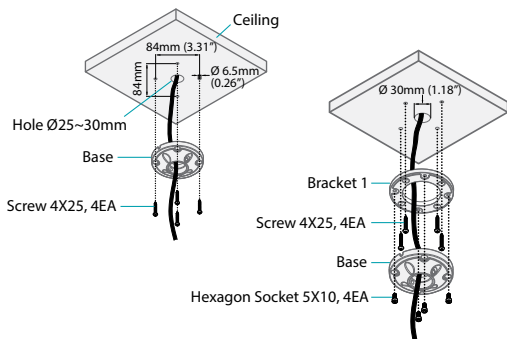


- **This bracket is intended to be used with DC-D1xxx or DC-D2233 series model of cameras. Do not use it with other models of cameras.**
- **This installation should be performed by a qualified service personnel in conformance to all local codes.**
- **You may need to reinforce the ceiling. If the ceiling is not strong enough to support the camera, the camera may fall.**
- **Do not use this product for other purposes.**

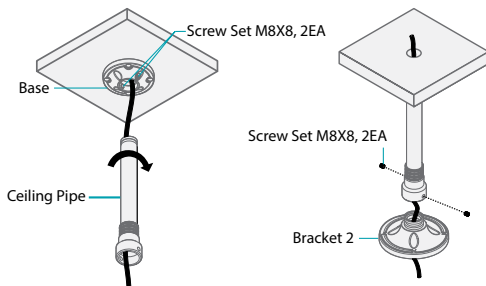
## Mounting

Mount the bracket to the ceiling as follows:

- 1 Insert cables from external devices, network and power adapter into base.
- 2 Mount base to the ceiling by using the anchors and screws. Or, mount bracket 1 to the ceiling and then the base to bracket 1 by using the anchors and screws.



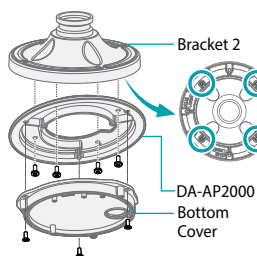
- 3 Insert cables from external devices, network and power adapter through the ceiling pipe.
- 4 Assemble the ceiling pipe into the base.
- 5 Insert cables from external devices, network and power adapter into bracket 2.
- 6 Assemble bracket 2 into the ceiling pipe and fix it by using the screws.



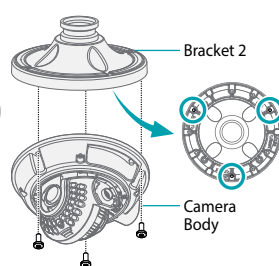
## Connect your camera to the bracket as follows:

- 7 If you have a DC-D1xxx series model of camera, screw the bottom cover onto an adaptor plate (DA-AP2000 model) and the adaptor plate onto bracket 2. The adaptor plate is sold separately. If you have a DC-D2233 series model of camera, screw the camera body onto bracket 2.

< DC-D1xxx Series >

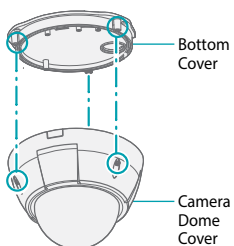


<DC-D2233 Series >

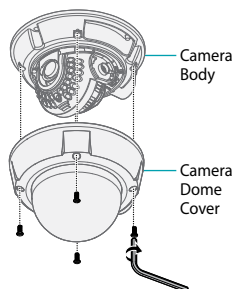


- 8 Connect or screw the camera dome cover onto the camera body or bottom cover.
- 9 Turn on power.

< DC-D1xxx Series >



<DC-D2233 Series >



## Dimensions

Unit: mm (inch)

